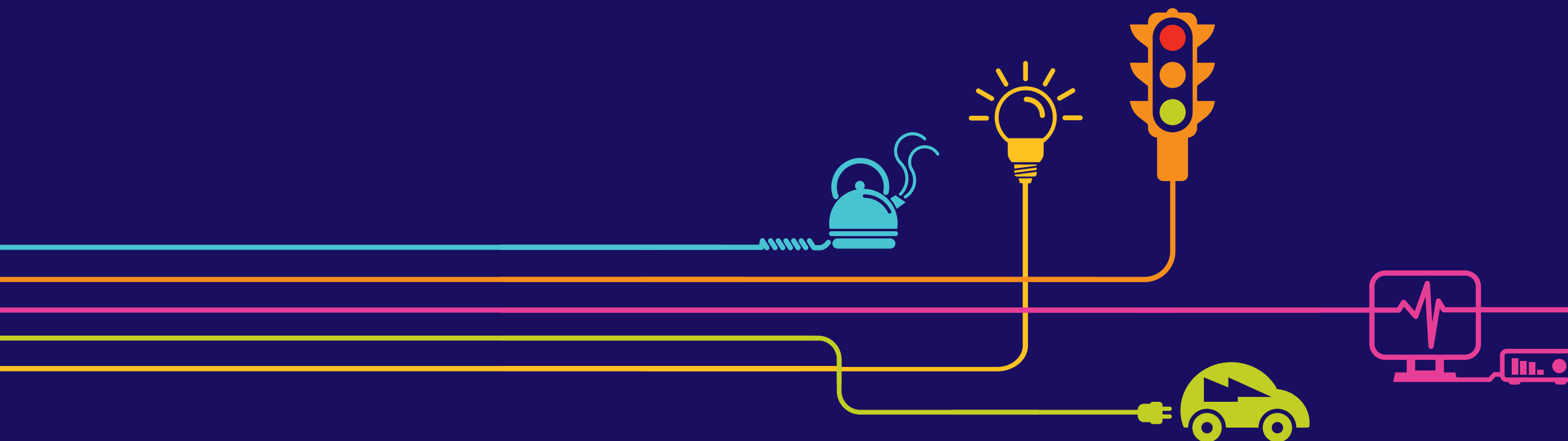


Environmental Statement Visual Effects Figures 7.8 to 7.9

Hinkley Point C Connection Project

*Regulation 5(2)(a) of the Infrastructure Planning
(Applications: Prescribed Forms and Procedure)
Regulations 2009*



Environmental Statement

Hinkley Point C Connection Project

5.7.3 – Visual Effects – Figures (orange highlight indicates the contents of this Volume)

Figure	Title
Volume 5.7.3.1	
7.1	Zone of Theoretical Visual Influence
7.2	Visual Receptors within 1km
Volume 5.7.3.2	
7.3	Long Distance Routes within 3km and Valued Views beyond 3km
7.4	Sequential and Representative Visual Receptors beyond 1 and 3km
Volume 5.7.3.3	
7.5	Photograph Viewpoint Locations within 1km
7.6	Section A: Photographs of Existing Views within 1km
Volume 5.7.3.4	
7.7	Section B: Photographs of Existing Views within 1km
Volume 5.7.3.5	
7.8	Section C: Photographs of Existing Views within 1km
7.9	Section D: Photographs of Existing Views within 1km
Volume 5.7.3.6	
7.10	Section E: Photographs of Existing Views within 1km
7.11	Section F: Photographs of Existing Views within 1km
Volume 5.7.3.7	
7.12	Section G: Photographs of Existing Views within 1km
7.13	Photograph Viewpoint Locations between 1 and 3km
Volume 5.7.3.8	
7.14	Photograph Viewpoint Locations beyond 3km
Volume 5.7.3.9	
7.15	Sections A: Photographs of Existing Views between 1 and 3km and beyond 3km
7.16	Section B: Photographs of Existing Views between 1 and 3km and beyond 3km
7.17	Section C: Photographs of Existing Views between 1 and 3km and beyond 3km
Volume 5.7.3.10	
7.18	Section D: Photographs of Existing Views between 1 and 3km and beyond 3km
7.19	Section E: Photographs of Existing Views between 1 and 3km and beyond 3km
7.20	Section F: Photographs of Existing Views between 1 and 3km and beyond 3km
7.21	Section G: Photographs of Existing Views between 1 and 3km and beyond 3km
7.22	Visual Receptors within 1km: Hinkley Line Entries
7.23	Sequential and Representative Visual Receptors between 1 and 3km and Valued Views beyond 3km: Hinkley Line Entries
7.24	Photograph Viewpoint Locations within 1km: Hinkley Line Entries
Volume 5.7.3.11	
7.25	Photographs of Existing Views within 1km: Hinkley Line Entries

Figure	Title
7.26	Photograph Viewpoint Locations between 1 and 3km and beyond 3km: Hinkley Line Entries
7.27	Photographs of Existing Views between 1 and 3km and beyond 3km: Hinkley Line Entries
7.28	Significance of Visual Effects on Receptors within 1km during Construction
Volume 5.7.3.12	
7.29	Significance of Visual Effects on Receptors between 1 and 3km and beyond 3km during Construction
Volume 5.7.3.13	
7.30	Significance of Visual Effects on Receptors within 1km during Operation
7.31	Significance of Visual Effects on Receptors between 1 and 3km and beyond 3km during Operation
Volume 5.7.3.14	
7.32	Bridgwater Tee CSE Compound – Landscape Mitigation and Detailed Planting Plans
7.33	South of Mendip Hills 400kV CSE Compound – Landscape Mitigation and Detailed Planting Plans
7.34	River Axe Cable Bridge Option – Landscape Mitigation and Detailed Planting Plan
7.35	Sandford 400kV/132kV Substation - Landscape Mitigation and Detailed Planting Plans
7.36	Towerhead Brook Bridge - Landscape Mitigation and Detailed Planting Plan
7.37	Significance of Visual Effects on Receptors within 1km during Construction: Hinkley Line Entries
7.38	Significance of Visual Effects on Receptors between 1 and 3km and beyond 3km during Construction: Hinkley Line Entries
7.39	Significance of Visual Effects on Receptors within 1km on Completion: Hinkley Line Entries
7.40	Significance of Visual Effects on Receptors between 1 and 3km and beyond 3km on Completion: Hinkley Line Entries

Figure 7.8 - Section C: Photographs of Existing Views within 1km



Photograph C1.1: Existing view from Barton Road (also the West Mendip Way long distance route) adjacent to Webbington Farm looking southwest beyond the property garden towards the route of the proposed 400kV underground cables across the Somerset Levels south of the Mendip Hills, and towards the F Route and the route of the proposed 400kV overhead line beyond. The site of the proposed CSE compound is screened in the view by intervening trees



Photograph C1.2: Existing view from the Webbington Hotel car park looking southwest towards the route of the proposed 400kV underground cables across the Somerset Levels south of the Mendip Hills, and towards the F Route and the route of the proposed 400kV overhead line beyond. The site of the proposed CSE compound adjacent is obscured in the view by intervening trees



Photograph C1.3: Existing view from the Webbington Hotel overflow carpark looking southwest towards the route of the proposed 400kV underground cables across the Somerset Levels south of the Mendip Hills, and towards the F Route, and the route of the proposed 400kV overhead line beyond. The site of the proposed CSE compound is partially screened by a road bridge embankment and by intervening trees

A	22/03/2014	DCO SUBMISSION	JS	NH	NH
ISSUE	DATE	COMMENTS	DRAW	CHKD	APP'D

Title					
NATIONAL GRID (HINKLEY POINT C CONNECTION PROJECT)					
ENVIRONMENTAL STATEMENT					
VOLUME 5.7.3					
SECTION C: PHOTOGRAPHS OF EXISTING VIEWS WITHIN 1KM					

nationalgrid			
National Grid plc, Warwick Technology Park, Galloway Hill, Warwick, CV34 6DA			
NG INVESTMENT No.	APPLICATION No.		IN
20897	EN020001		A3
FIGURE No.	DRAWING No.	SCALE	
7.8.1	IN1979.24.003	NTS	
SHEET 1 OF 27			ISSUE
			A



Photograph C1.4: Existing view from PRow AX21/2 looking southeast towards the F Route and towards the route of the proposed 400kV underground cables on the Somerset Levels south of the Mendip Hills, and the route of the proposed 400kV overhead line beyond. The site of the proposed CSE compound is screened by intervening trees



Photograph C1.5: Existing view from PRow AX21/2 looking south towards the route of the proposed 400kV underground cables on the Somerset Levels and Moors south of the Mendip Hills and towards the F Route, and the route of the proposed 400kV overhead line filtered and screened by intervening field hedgerow and trees. The site of the proposed CSE compound is partially screened by intervening trees



Photograph C1.6: Existing view from the West Mendip Way long distance route (also PRow AX 21/1) looking south towards the F Route beyond the M5 motorway and towards the route of the proposed 400kV underground cables, the site of the proposed CSE compound adjacent to the road bridge and towards the route of the proposed 400kV overhead line running south across the Somerset Levels and Moors beyond

A	22/03/2014	DCO SUBMISSION	JS	NH	NH
ISSUE	DATE	COMMENTS	DRAW	CHKD	APP'D

<u>Title</u> NATIONAL GRID (HINKLEY POINT C CONNECTION PROJECT) ENVIRONMENTAL STATEMENT VOLUME 5.7.3 SECTION C: PHOTOGRAPHS OF EXISTING VIEWS WITHIN 1KM					
--	--	--	--	--	--

<div><div>nationalgrid</div><div>National Grid plc, Warwick Technology Park, Galloway Hill, Warwick, CV34 6DA</div></div>			
NG INVESTMENT No.	APPLICATION No.		IN
20897	EN020001		A3
FIGURE No.	DRAWING No.	SCALE	
7.8.2	IN1979.24.003	NTS	
SHEET 2 OF 27			ISSUE
			A



Photograph C1.7: Existing view from Christon Road on higher ground on the northern edge of Loxton looking east and northeast towards the F Route and the route of the proposed 400kV underground cables roughly parallel to the M5 motorway



Photograph C1.8 Part 1: Existing view from PRow AX21/7 on lower ground on the edge of Loxton looking east and northeast towards the F Route and the route of the proposed 400kV underground cables roughly parallel to the M5 motorway at the foot of Crook Peak



Photograph C1.8 Part 2: Existing view from PRow AX21/7 on lower ground on the edge of Loxton looking southeast towards the F Route partly screened by intervening trees along Sevier Road and the M5 motorway

A	22/03/2014	DCO SUBMISSION	JS	NH	NH
ISSUE	DATE	COMMENTS	DRAW	CHKD	APP'D

Title
NATIONAL GRID (HINKLEY POINT C
CONNECTION PROJECT)
ENVIRONMENTAL STATEMENT
VOLUME 5.7.3

SECTION C: PHOTOGRAPHS OF EXISTING
VIEWS WITHIN 1KM

nationalgrid <small>National Grid plc, Warwick Technology Park, Galloway Hill, Warwick, CV34 6DA</small>			
NG INVESTMENT No.	APPLICATION No.		IN
20897	EN020001		A3
FIGURE No.	DRAWING No.	SCALE	
7.8.3	IN1979.24.003	NTS	
SHEET 3 OF 27			ISSUE
			A



Photograph C1.9: Existing view from the southern boundary of the Church at Loxton looking east and northeast towards the F Route and the route of the proposed 400kV underground cables alongside the M5 motorway at the foot of Crook Peak




Photograph C1.10: Existing view from the West Mendip Way long distance route on Barton Road adjacent to a residential property (The Lodge) looking towards the F Route (visible through a field gate) and the route of the proposed 400kV underground cables on lower ground largely filtered and screened by roadside hedgerow



Photograph C1.11: Existing view from the West Mendip Way long distance route on Barton Road above roadside hedgerow looking west towards the F Route and the route of the proposed 400kV underground cables on lower ground running parallel to the M5 motorway, partially filtered and screened by hedgerow to the southwest

A	22/03/2014	DCO SUBMISSION	JS	NH	NH
ISSUE	DATE	COMMENTS	DRAW	CHKD	APP'D

Title					
NATIONAL GRID (HINKLEY POINT C CONNECTION PROJECT)					
ENVIRONMENTAL STATEMENT					
VOLUME 5.7.3					
SECTION C: PHOTOGRAPHS OF EXISTING VIEWS WITHIN 1KM					

			
National Grid plc, Warwick Technology Park, Gallow's Hill, Warwick, CV34 6DA			
NG INVESTMENT No.	APPLICATION No.		IN
20897	EN020001		A3
FIGURE No.	DRAWING No.	SCALE	
7.8.4	IN1979.24.003	NTS	
SHEET 4 OF 27			ISSUE
			A



Photograph C1.12: Existing view from the West Mendip Way long distance route (on higher ground) looking north and northwest towards the F Route and the route of the proposed 400kV underground cables on lower ground beyond the roadside hedgerow



Photograph C1.13: Existing view from the West Mendip Way long distance route (also PRoW AX15/6) looking northwest towards the F Route and the route of the proposed 400kV underground cables on lower ground in the valley



Photograph C1.14: Existing view from the West Mendip Way long distance route (also AX15/9) on Compton Hill looking northwest towards Banwell Wood across the top of Banwell Hill. The F Route and the route of the proposed 400kV underground cables are screened in the view by landform and the stone wall

A	22/03/2014	DCO SUBMISSION	JS	NH	NH
ISSUE	DATE	COMMENTS	DRAW	CHKD	APP'D

Title

NATIONAL GRID (HINKLEY POINT C
CONNECTION PROJECT)
ENVIRONMENTAL STATEMENT
VOLUME 5.7.3

SECTION C: PHOTOGRAPHS OF EXISTING
VIEWS WITHIN 1KM

nationalgrid			National Grid plc, Warwick Technology Park, Gallows Hill, Warwick, CV34 6DA		
NG INVESTMENT No.	APPLICATION No.		IN		
20897	EN020001		A3		
FIGURE No.	DRAWING No.		SCALE		
7.8.5	IN1979.24.003		NTS		
SHEET 5 OF 27			ISSUE		
			A		



Photograph C1.15: Existing view from the PRow AX15/6 on Compton Hill looking south towards the Somerset Levels and Moors and Compton Bishop. The F Route and the route of the proposed 400kV overhead line are screened by landform



Photograph C1.16: Existing view from the hillside south of the summit of Crook Peak looking southwest towards the route of the proposed 400kV underground cables on the Somerset Levels south of the Mendip Hills, and towards the F Route, the route of the proposed 400kV overhead line and towards the CSE compound site beyond



Photograph C1.17: Existing view from teh summit of Crook Peak looking northwest towards the F Route and the route of the proposed 400kV underground cables on lower ground in the valley

A	22/03/2014	DCO SUBMISSION	JS	NH	NH
ISSUE	DATE	COMMENTS	DRAW	CHK'D	APP'D
<div>Title</div> <div>NATIONAL GRID (HINKLEY POINT C CONNECTION PROJECT) ENVIRONMENTAL STATEMENT VOLUME 5.7.3</div> <div>SECTION C: PHOTOGRAPHS OF EXISTING VIEWS WITHIN 1KM</div>					
<div><div><div>nationalgrid</div></div><div>National Grid plc, Warwick Technology Park, Gallows Hill, Warwick, CV34 6DA</div></div>					
NG INVESTMENT No.	APPLICATION No.		IN		
20897	EN020001		A3		
FIGURE No.	DRAWING No.		SCALE		
7.8.6	IN1979.24.003		NTS		
SHEET 6 OF 27			ISSUE		
			A		



Photograph C1.18: Existing view from West Mendip Way long distance route (also PRow AX15/19) looking north across the Lox Yeo Valley towards the F Route and the route of the proposed 400kV underground cables on lower ground in the valley partially screened by intervening landform



Photograph C1.19: Existing view from the West Mendip Way long distance route (also PRow AX15/19) on Barton Hill looking northeast towards the gap between Banwell Hill and Sandford Hill and towards the F Route and the route of the proposed 400kV underground cables on lower ground in the valley partly screened by intervening landform

A	22/03/2014	DCO SUBMISSION	JS	NH	NH
ISSUE	DATE	COMMENTS	DRAW	CHK'D	APP'D
<div>Title</div> <div>NATIONAL GRID (HINKLEY POINT C CONNECTION PROJECT) ENVIRONMENTAL STATEMENT VOLUME 5.7.3</div> <div>SECTION C: PHOTOGRAPHS OF EXISTING VIEWS WITHIN 1KM</div>					
<div><div><div>nationalgrid</div></div><div>National Grid plc, Warwick Technology Park, Gallows Hill, Warwick, CV34 6DA</div></div>					
NG INVESTMENT No.		APPLICATION No.		IN	
20897		EN020001		A3	
FIGURE No.		DRAWING No.		SCALE	
7.8.7		IN1979.24.003		NTS	
SHEET 7 OF 27				ISSUE	
				A	



Photograph C1.20 Part 1: Existing view from Barton Road looking west towards the F Route and the route of the proposed 400kV underground cables between running the M5 motorway and the F Route



Photograph C1.20 Part 2: Existing view from Barton Road looking north towards the F Route and the route of the proposed 400kV underground cables closer in the view



Photograph C1.21: Existing view from Barton Road near Laurel Farm looking north towards the route of the proposed 400kV underground cables and towards the F Route with some filtering and screening in the view by hedgerows and trees

A	22/03/2014	DCO SUBMISSION	JS	NH	NH
ISSUE	DATE	COMMENTS	DRAW	CHKD	APP'D

Title NATIONAL GRID (HINKLEY POINT C CONNECTION PROJECT) ENVIRONMENTAL STATEMENT VOLUME 5.7.3					
SECTION C: PHOTOGRAPHS OF EXISTING VIEWS WITHIN 1KM					

nationalgrid <small>National Grid plc, Warwick Technology Park, Galloway Hill, Warwick, CV34 6DA</small>					
NG INVESTMENT No.	APPLICATION No.		IN		
20897	EN020001		A3		
FIGURE No.	DRAWING No.		SCALE		
7.8.8	IN1979.24.003		NTS		
SHEET 8 OF 27				ISSUE	
				A	



Photograph C1.22: Existing view from Barton Road near Home Farm looking north towards the F Route partially filtered and screened by hedgerows, trees and walls, and towards the route of the proposed 400kV underground cables screened by hedgerows and trees



Photograph C1.23 Part 1: Existing view from PRow AX29/28 northwest of Barton looking northwest towards the F Route and the route of the proposed 400kV underground cables closer in the view



Photograph C1.23 Part 2: Existing view from PRow AX29/28 northwest of Barton looking north towards the F Route and the route of the proposed 400kV underground cables closer in the view

A	22/03/2014	DCO SUBMISSION	JS	NH	NH
ISSUE	DATE	COMMENTS	DRAW	CHKD	APP'D

Title					
NATIONAL GRID (HINKLEY POINT C CONNECTION PROJECT)					
ENVIRONMENTAL STATEMENT					
VOLUME 5.7.3					
SECTION C: PHOTOGRAPHS OF EXISTING VIEWS WITHIN 1KM					

nationalgrid					
National Grid plc, Warwick Technology Park, Galloway Hill, Warwick, CV34 6DA					
NG INVESTMENT No.	APPLICATION No.		IN		
20897	EN020001		A3		
FIGURE No.	DRAWING No.		SCALE		
7.8.9	IN1979.24.003		NTS		
SHEET 9 OF 27				ISSUE	
				A	



Photograph C1.24: Existing view from Barton Road near Barton Farm looking north towards the F Route and the route of the proposed 400kV underground cables screened by intervening hedgerows and trees



Photograph C1.25: Existing view from PRow AX29/39 near Barton Road looking northwest towards the F Route and the route of the proposed 400kV underground cables on lower ground in the valley with partial screening by hedgerows and trees



Photograph C1.26: Existing view from PRow AX29/40 south of Barton looking north towards the F Route and the route of the proposed 400kV underground cables on lower ground in the valley backgrounded by valley farmland

A	22/03/2014	DCO SUBMISSION	JS	NH	NH
ISSUE	DATE	COMMENTS	DRAW	CHKD	APP'D

<u>Title</u> NATIONAL GRID (HINKLEY POINT C CONNECTION PROJECT) ENVIRONMENTAL STATEMENT VOLUME 5.7.3					
SECTION C: PHOTOGRAPHS OF EXISTING VIEWS WITHIN 1KM					

<div><div><div><div></div><div></div></div><div><div></div><div></div></div></div><div><div><div></div><div></div></div><div><div></div><div></div></div></div><div><div><div></div><div></div></div><div><div></div><div></div></div></div></div> <div><div><div></div><div></div></div><div><div></div><div></div></div></div> <div><div><div></div><div></div></div><div><div></div><div></div></div></div> <div><div><div></div><div></div></div><div><div></div><div></div></div></div> <div><div><div></div><div></div></div><div><div></div><div></div></div></div> <div><div><div></div><div></div></div><div><div></div><div></div></div></div> <div><div><div></div><div></div></div><div><div></div><div></div></div></div> <div><div><div></div><div></div></div><div><div></div><div></div></div></div> <div><div><div></div><div></div></div><div><div></div><div></div></div></div> <div><div><div></div><div></div></div><div><div></div><div></div></div></div> <div><div><div></div><div></div></div><div><div></div><div></div></div></div> <div><div><div></div><div></div></div><div><div></div><div></div></div></div> <div><div><div></div><div></div></div><div><div></div><div></div></div></div> <div><div><div></div><div></div></div><div><div></div><div></div></div></div> <div><div><div></div><div></div></div><div><div></div><div></div></div></div> <div><div><div></div><div></div></div><div><div></div><div></div></div></div> <div><div><div></div><div></div></div><div><div></div><div></div></div></div> <div><div><div></div><div></div></div><div><div></div><div></div></div></div> <div><div><div></div><div></div></div><div><div></div><div></div></div></div> <div><div><div></div><div></div></div><div><div></div><div></div></div></div> <div><div><div></div><div></div></div><div><div></div><div></div></div></div> <div><div><div></div><div></div></div><div><div></div><div></div></div></div> <div><div><div></div><div></div></div><div><div></div><div></div></div></div> <div><div><div></div><div></div></div><div><div></div><div></div></div></div> <div><div><div></div><div></div></div><div><div></div><div></div></div></div> <div><div><div></div><div></div></div><div><div></div><div></div></div></div> <div><div><div></div><div></div></div><div><div></div><div></div></div></div> <div><div><div></div><div></div></div><div><div></div><div></div></div></div> <div><div><div></div><div></div></div><div><div></div><div></div></div></div> <div><div><div></div><div></div></div><div><div></div><div></div></div></div> <div><div><div></div><div></div></div><div><div></div><div></div></div></div> <div><div><div></div><div></div></div><div><div></div><div></div></div></div> <div><div><div></div><div></div></div><div><div></div><div></div></div></div> <div><div><div></div><div></div></div><div><div></div><div></div></div></div> <div><div><div></div><div></div></div><div><div></div><div></div></div></div> <div><div><div></div><div></div></div><div><div></div><div></div></div></div> <div><div><div></div><div></div></div><div><div></div><div></div></div></div> <div><div><div></div><div></div></div><div><div></div><div></div></div></div> <div><div><div></div><div></div></div><div><div></div><div></div></div></div> <div><div><div></div><div></div></div><div><div></div><div></div></div></div> <div><div><div></div><div></div></div><div><div></div><div></div></div></div> <div><div><div></div><div></div></div><div><div></div><div></div></div></div> <div><div><div></div><div></div></div><div><div></div><div></div></div></div> <div><div><div></div><div></div></div><div><div></div><div></div></div></div> <div><div><div></div><div></div></div><div><div></div><div></div></div></div> <div><div><div></div><div></div></div><div><div></div><div></div></div></div> <div><div><div></div><div></div></div><div><div></div><div></div></div></div> <div><div><div></div><div></div></div><div><div></div><div></div></div></div> <div><div><div></div><div></div></div><div><div></div><div></div></div></div> <div><div><div></div><div></div></div><div><div></div><div></div></div></div> <div><div><div></div><div></div></div><div><div></div><div></div></div></div> <div><div><div></div><div></div></div><div><div></div><div></div></div></div> <div><div><div></div><div></div></div><div><div></div><div></div></div></div> <div><div><div></div><div></div></div><div><div></div><div></div></div></div> <div><div><div></div><div></div></div><div><div></div><div></div></div></div> <div><div><div></div><div></div></div><div><div></div><div></div></div></div> <div><div><div></div><div></div></div><div><div></div><div></div></div></div> <div><div><div></div><div></div></div><div><div></div><div></div></div></div> <div><div><div></div><div></div></div><div><div></div><div></div></div></div> <div><div><div></div><div></div></div><div><div></div><div></div></div></div> <div><div><div></div><div></div></div><div><div></div><div></div></div></div> <div><div><div></div><div></div></div><div><div></div><div></div></div></div> <div><div><div></div><div></div></div><div><div></div><div></div></div></div> <div><div><div></div><div></div></div><div><div></div><div></div></div></div> <div><div><div></div><div></div></div><div><div></div><div></div></div></div> <div><div><div></div><div></div></div><div><div></div><div></div></div></div> <div><div><div></div><div></div></div><div><div></div><div></div></div></div> <div><div><div></div><div></div></div><div><div></div><div></div></div></div> <div><div><div></div><div></div></div><div><div></div><div></div></div></div> <div><div><div></div><div></div></div><div><div></div><div></div></div></div> <div><div><div></div><div></div></div><div><div></div><div></div></div></div> <div><div><div></div><div></div></div><div><div></div><div></div></div></div> <div><div><div></div><div></div></div><div><div></div><div></div></div></div> <div><div><div></div><div></div></div><div><div></div><div></div></div></div> <div><div><div></div><div></div></div><div><div></div><div></div></div></div> <div><div><div></div><div></div></div><div><div></div><div></div></div></div> <div><div><div></div><div></div></div><div><div></div><div></div></div></div> <div><div><div></div><div></div></div><div><div></div><div></div></div></div> <div><div><div></div><div></div></div><div><div></div><div></div></div></div> <div><div><div></div><div></div></div><div><div></div><div></div></div></div> <div><div><div></div><div></div></div><div><div></div><div></div></div></div> <div><div><div></div><div></div></div><div><div></div><div></div></div></div> <div><div><div></div><div></div></div><div><div></div><div></div></div></div> <div><div><div></div><div></div></div><div><div></div><div></div></div></div> <div><div><div></div><div></div></div><div><div></div><div></div></div></div> <div><div><div></div><div></div></div><div><div></div><div></div></div></div> <div><div><div></div><div></div></div><div><div></div><div></div></div></div> <div><div><div></div><div></div></div><div><div></div><div></div></div></div> <div><div><div></div><div></div></div><div><div></div><div></div></div></div> <div><div><div></div><div></div></div><div><div></div><div></div></div></div> <div><div><div></div><div></div></div><div><div></div><div></div></div></div> <div><div><div></div><div></div></div><div><div></div><div></div></div></div> <div><div><div></div><div></div></div><div><div></div><div></div></div></div> <div><div><div></div><div></div></div><div><div></div><div></div></div></div> <div><div><div></div><div></div></div><div><div></div><div></div></div></div> <div><div><div></div><div></div></div><div><div></div><div></div></div></div> <div><div><div></div><div></div></div><div><div></div><div></div></div></div> <div><div><div></div><div></div></div><div><div></div><div></div></div></div> <div><div><div></div><div></div></div><div><div></div><div></div></div></div> <div><div><div></div><div></div></div><div><div></div><div></div></div></div> <div><div><div></div><div></div></div><div><div></div><div></div></div></div> <div><div><div></div><div></div></div><div><div></div><div></div></div></div> <div><div><div></div><div></div></div><div><div></div><div></div></div></div> <div><div><div></div><div></div></div><div><div></div><div></div></div></div> <div><div><div></div><div></div></div><div><div></div><div></div></div></div> <div><div><div></div><div></div></div><div><div></div><div></div></div></div> <div><div><div></div><div></div></div><div><div></div><div></div></div></div> <div><div><div></div><div></div></div><div><div></div><div></div></div></div> <div><div><div></div><div></div></div><div><div></div><div></div></div></div> <div><div><div></div><div></div></div><div><div></div><div></div></div></div> <div><div><div></div><div></div></div><div><div></div><div></div></div></div> <div><div><div></div><div></div></div><div><div></div><div></div></div></div> <div><div><div></div><div></div></div><div><div></div><div></div></div></div> <div><div><div></div><div></div></div><div><div></div><div></div></div></div> <div><div><div></div><div></div></div><div><div></div><div></div></div></div> <div><div><div></div><div></div></div><div><div></div><div></div></div></div> <div><div><div></div><div></div></div><div><div></div><div></div></div></div> <div><div><div></div><div></div></div><div><div></div><div></div></div></div> <div><div><div></div><div></div></div><div><div></div><div></div></div></div> <div><div><div></div><div></div></div><div><div></div><div></div></div></div> <div><div><div></div><div></div></div><div><div></div><div></div></div></div> <div><div><div></div><div></div></div><div><div></div><div></div></div></div> <div><div><div></div><div></div></div><div><div></div><div></div></div></div> <div><div><div></div><div></div></div><div><div></div><div></div></div></div> <div><div><div></div><div></div></div><div><div></div><div></div></div></div> <div><div><div></div><div></div></div><div><div></div><div></div></div></div> <div><div><div></div><div></div></div><div><div></div><div></div></div></div> <div><div><div></div><div></div></div><div><div></div><div></div></div></div> <div><div><div></div><div></div></div><div><div></div><div></div></div></div> <div><div><div></div><div></div></div><div><div></div><div></div></div></div> <div><div><div></div><div></div></div><div><div></div><div></div></div></div> <div><div><div></div><div></div></div><div><div></div><div></div></div></div> <div><div><div></div><div></div></div><div><div></div><div></div></div></div> <div><div><div></div><div></div></div><div><div></div><div></div></div></div> <div><div><div></div><div></div></div><div><div></div><div></div></div></div> <div><div><div></div><div></div></div><div><div></div><div></div></div></div> <div><div><div></div><div></div></div><div><div></div><div></div></div></div> <div><div><div></div><div></div></div><div><div></div><div></div></div></div> <div><div><div></div><div></div></div><div><div></div><div></div></div></div> <div><div><div></div><div></div></div><div><div></div><div></div></div></div> <div><div><div></div><div></div></div><div><div></div><div></div></div></div> <div><div><div></div><div></div></div><div><div></div><div></div></div></div> <div><div><div></div><div></div></div><div><div></div><div></div></div></div> <div><div><div></div><div></div></div><div><div></div><div></div></div></div> <div><div><div></div><div></div></div><div><div></div><div></div></div></div> <div><div><div></div><div></div></div><div><div></div><div></div></div></div> <div><div><div></div><</div></div>			
--	--	--	--



Photograph C1.27: Existing view from Barton Road near Barton Vale looking northwest towards the F Route and the route of the proposed 400kV underground cables filtered and screened by garden trees



Photograph C1.28: Existing view from Christon looking south towards the F Route and the route of the proposed 400kV underground cables screened by intervening trees and buildings. The distant view extends south beyond the Loxton Gap across the Somerset Levels and Moors in Section B



Photograph C1.29: Existing view from Christon Road looking south towards the F Route backgrounded by Crook Peak and towards the route of the proposed 400kV underground cables running parallel to the M5 motorway across farmland

A	22/03/2014	DCO SUBMISSION	JS	NH	NH
ISSUE	DATE	COMMENTS	DRAW	CHKD	APP'D

<u>Title</u> NATIONAL GRID (HINKLEY POINT C CONNECTION PROJECT) ENVIRONMENTAL STATEMENT VOLUME 5.7.3 SECTION C: PHOTOGRAPHS OF EXISTING VIEWS WITHIN 1KM					
--	--	--	--	--	--

<div><div><div>nationalgrid</div><div>National Grid plc, Warwick Technology Park, Galloway Hill, Warwick, CV34 6DA</div></div></div>			
NG INVESTMENT No.	APPLICATION No.		IN
20897	EN020001		A3
FIGURE No.	DRAWING No.		SCALE
7.8.11	IN1979.24.003		NTS
SHEET 11 OF 27			ISSUE
			A



Photograph C1.30: Existing view from PRow AX21/5 looking south towards the F Route backgrounded by Crook Peak and towards the route of the proposed 400kV underground cables roughly parallel to the M5 motorway across the fields on lower ground



Photograph C1.31: Existing view from PRow AX3/51 near Yarberry Farm looking south towards the F Route visible on the skyline at the foot of Crook Peak and towards the route of the proposed 400kV underground cables screened from view by intevening hedgerow and trees

A	22/03/2014	DCO SUBMISSION	JS	NH	NH
ISSUE	DATE	COMMENTS	DRAW	CHK'D	APP'D
<div>Title</div> <div>NATIONAL GRID (HINKLEY POINT C CONNECTION PROJECT) ENVIRONMENTAL STATEMENT VOLUME 5.7.3</div> <div>SECTION C: PHOTOGRAPHS OF EXISTING VIEWS WITHIN 1KM</div>					
<div><div><div>nationalgrid</div><div>National Grid plc, Warwick Technology Park, Gallows Hill, Warwick, CV34 6DA</div></div></div>					
NG INVESTMENT No.		APPLICATION No.		IN	
20897		EN020001		A3	
FIGURE No.		DRAWING No.		SCALE	
7.8.12		IN1979.24.003		NTS	
SHEET 12 OF 27				ISSUE	
				A	



Photograph C1.32 Part 1: Existing view from PRow AX3/51 south of Yarberry Farm looking south towards the F Route backgrounded by the hillside and towards the route of the proposed 400kV underground cables screened from view by hedgerows and trees



Photograph C1.32 Part 2: Existing view from PRow AX3/51 south of Yarberry Farm looking southwest towards the F Route backgrounded by the hillside and towards the route of the proposed 400kV underground cables screened by intervening hedgerow and trees



Photograph C1.33: Existing view from PRow AX 29/28 looking southwest towards the route of the proposed 400kV underground cables screened in the view by intervening hedgerows and trees and towards the F Route which is partially backgrounded by Crook Peak but visible in the southwest against the sky

A	22/03/2014	DCO SUBMISSION	JS	NH	NH
ISSUE	DATE	COMMENTS	DRAW	CHKD	APP'D

Title					
NATIONAL GRID (HINKLEY POINT C CONNECTION PROJECT)					
ENVIRONMENTAL STATEMENT					
VOLUME 5.7.3					
SECTION C: PHOTOGRAPHS OF EXISTING VIEWS WITHIN 1KM					

nationalgrid			
National Grid plc, Warwick Technology Park, Galloway Hill, Warwick, CV34 6DA			
NG INVESTMENT No.	APPLICATION No.		IN
20897	EN020001		A3
FIGURE No.	DRAWING No.	SCALE	
7.8.13	IN1979.24.003	NTS	
SHEET 13 OF 27			ISSUE
			A



Photograph C1.34: Existing view from PRow AX29/28 looking southeast towards the F Route partially backgrounded by hills beyond and the route of the proposed 400kV underground cables screened in the view by intervening field boundary hedgerow



Photograph C1.35 Part 1: Existing view from PRow AX3/16 looking south towards the F Route backgrounded the hills on the opposite side of the valley and towards the route of the proposed 400kV underground cables visible across fields on the valley floor



Photograph C1.35 Part 2: Existing view from PRow AX3/16 looking southwest towards the F Route partially backgrounded by the hillside but visible against the sky at the foot of Crook Peak to the southwest and towards the route of the proposed 400kV underground cables visible across fields on the valley floor

A	22/03/2014	DCO SUBMISSION	JS	NH	NH
ISSUE	DATE	COMMENTS	DRAW	CHKD	APP'D

Title

NATIONAL GRID (HINKLEY POINT C CONNECTION PROJECT)
ENVIRONMENTAL STATEMENT
VOLUME 5.7.3

SECTION C: PHOTOGRAPHS OF EXISTING VIEWS WITHIN 1KM

nationalgrid			National Grid plc, Warwick Technology Park, Gallow's Hill, Warwick, CV34 6DA		
NG INVESTMENT No.	APPLICATION No.		IN		
20897	EN020001		A3		
FIGURE No.	DRAWING No.		SCALE		
7.8.14	IN1979.24.003		NTS		
SHEET 14 OF 27			ISSUE		
			A		



Photograph C1.36: Existing view from PRow AX3/46 near Warren Cottage looking south towards the F Route partially screened intervening trees in the foreground and backgrounded by hillside on the opposite side of the valley but visible against the sky in the Loxton Gap to the southwest. The view is also looking towards the route of the proposed 400kV underground cables along the valley floor partially screened by intervening trees



Photograph C1.37: Existing view from Wint Hill looking south towards the F Route on lower ground screened by Winthill Farm and garden trees, and towards the route of the proposed 400kV underground cables on the vally floor partly visible beyond Winthill Farm

A	22/03/2014	DCO SUBMISSION	JS	NH	NH
ISSUE	DATE	COMMENTS	DRAW	CHK'D	APP'D
<div>Title</div> <div>NATIONAL GRID (HINKLEY POINT C CONNECTION PROJECT) ENVIRONMENTAL STATEMENT VOLUME 5.7.3</div> <div>SECTION C: PHOTOGRAPHS OF EXISTING VIEWS WITHIN 1KM</div>					
<div><div><div>nationalgrid</div></div><div>National Grid plc, Warwick Technology Park, Gallows Hill, Warwick, CV34 6DA</div></div>					
NG INVESTMENT No.		APPLICATION No.		IN	
20897		EN020001		A3	
FIGURE No.		DRAWING No.		SCALE	
7.8.15		IN1979.24.003		NTS	
SHEET 15 OF 27				ISSUE	
				A	



Photograph C1.38 Part 1: Existing view from PRow AX3/20 (near Wint Hill) looking southeast and south towards the F Route backgrounded by the valley and trees and towards the route of the proposed 400kV underground cables across farmland




Photograph C1.38 Part 2: Existing view from PRow AX3/20 looking south and southwest towards the F Route partially backgrounded by higher ground, but perceptible at the foot of Crook Peak at Loxton Gap and towards the route of the proposed 400kV underground cables across farmland filtered and screened by intervening trees



Photograph C1.39: Existing view from PRow AX3/19 looking south towards the F Route barely perceptible due to backgrounding by higher ground and towards the route of the proposed 400kV underground cables predominantly screened by intervening hedgerow, trees and landform

A	22/03/2014	DCO SUBMISSION	JS	NH	NH
ISSUE	DATE	COMMENTS	DRAW	CHKD	APP'D

Title					
NATIONAL GRID (HINKLEY POINT C CONNECTION PROJECT)					
ENVIRONMENTAL STATEMENT					
VOLUME 5.7.3					
SECTION C: PHOTOGRAPHS OF EXISTING VIEWS WITHIN 1KM					

			
National Grid plc, Warwick Technology Park, Galloway Hill, Warwick, CV34 6DA			
NG INVESTMENT No.	APPLICATION No.		IN
20897	EN020001		A3
FIGURE No.	DRAWING No.	SCALE	
7.8.16	IN1979.24.003	NTS	
SHEET 16 OF 27			ISSUE
			A



Photograph C1.40: Existing view from PRow AX3/47 looking northeast towards the F Route, the N Route and the AT Route and the route of the proposed 400kV underground cables and 400kV and 132kV overhead lines and towards the site of the proposed Sandford Substation. Existing overhead lines are barely perceptible due to backgrounding



Photograph C1.41: Existing view from PRow AX3/47 looking northeast towards the F Route, the N Route and the AT Route barely perceptible due to backgrounding and towards the route of the proposed 400kV underground cables and 400kV and 132kV overhead lines and towards the site of the proposed Sandford Substation



Photograph C1.42: Existing view from PRow AX3/47 looking northeast towards the F Route barely perceptible due to backgrounding and towards the route of the proposed 400kV underground cables partially screened by intervening landform and trees and and towards the route of the proposed 400kV and 132kV overhead lines

A	22/03/2014	DCO SUBMISSION	JS	NH	NH
ISSUE	DATE	COMMENTS	DRAW	CHKD	APP'D

Title NATIONAL GRID (HINKLEY POINT C CONNECTION PROJECT) ENVIRONMENTAL STATEMENT VOLUME 5.7.3 SECTION C: PHOTOGRAPHS OF EXISTING VIEWS WITHIN 1KM					
--	--	--	--	--	--

nationalgrid National Grid plc, Warwick Technology Park, Gallows Hill, Warwick, CV34 6DA			
NG INVESTMENT No.	APPLICATION No.		IN
20897	EN020001		A3
FIGURE No.	DRAWING No.	SCALE	
7.8.17	IN1979.24.003	NTS	
SHEET 17 OF 27			ISSUE
			A



Photograph C1.43: Existing view from Max Mill Lane looking northwest and north towards the F Route partially backgrounded and filtered by intervening mature trees and towards the route of the proposed 400kV underground cables screened by hedgerow and trees



Photograph C1.44: Existing view from Max Mill Lane looking north and northeast towards the F Route filtered by trees along the Lox Yeo River to the southwest and towards the route of the proposed 400kV underground cables filtered and screened from view by roadside hedgerow

A	22/03/2014	DCO SUBMISSION	JS	NH	NH
ISSUE	DATE	COMMENTS	DRAW	CHK'D	APP'D
<div>Title</div> <div>NATIONAL GRID (HINKLEY POINT C CONNECTION PROJECT) ENVIRONMENTAL STATEMENT VOLUME 5.7.3</div> <div>SECTION C: PHOTOGRAPHS OF EXISTING VIEWS WITHIN 1KM</div>					
<div><div><div>nationalgrid</div><div>National Grid plc, Warwick Technology Park, Gallows Hill, Warwick, CV34 6DA</div></div></div>					
NG INVESTMENT No.		APPLICATION No.		IN	
20897		EN020001		A3	
FIGURE No.		DRAWING No.		SCALE	
7.8.18		IN1979.24.003		NTS	
SHEET 18 OF 27				ISSUE	
				A	



Photograph C1.45 Part 1: Existing view from Max Mill Lane looking northwest and north across the route of the proposed 400kV underground cables across the open field




Photograph C1.45 Part 2: Existing view from Max Mill Lane looking north and northeast towards the route of the proposed 400kV underground cables across the open field and towards the F Route partly visible above hedgerow and trees



Photograph C1.46: Existing view from PRow AX3/21 near Rhodgate Farm looking south and southwest towards the F Route perceptible against the sky at the foot of Crook Peak to the southwest and backgrounded by higher ground and filtered by intervening trees. The view includes the route of the proposed 400kV underground cables across farmland on lower ground partially screened by hedgerow and trees

A	22/03/2014	DCO SUBMISSION	JS	NH	NH
ISSUE	DATE	COMMENTS	DRAW	CHKD	APP'D

Title					
NATIONAL GRID (HINKLEY POINT C CONNECTION PROJECT)					
ENVIRONMENTAL STATEMENT					
VOLUME 5.7.3					
SECTION C: PHOTOGRAPHS OF EXISTING VIEWS WITHIN 1KM					

			
National Grid plc, Warwick Technology Park, Galloway Hill, Warwick, CV34 6DA			
NG INVESTMENT No.	APPLICATION No.		IN
20897	EN020001		A3
FIGURE No.	DRAWING No.	SCALE	
7.8.19	IN1979.24.003	NTS	
SHEET 19 OF 27		ISSUE	
		A	



Photograph C1.47: Existing view from PRow AX3/1 near Rhodyate Farm looking southeast towards the F Route barely perceptible due to backgrounding effect by higher ground and trees and towards the route of the proposed 400kV underground cables partially visible across farmland



Photograph C1.48: Existing view from Banwell Castle looking south and southeast towards the F Route largely screened by foreground trees and backgrounded by trees and fields. The route of the proposed 400kV underground cables is visible for a short section across fields on lower ground above intervening hedgerows. The view includes the church at Winscombe on the opposite side of the valley



Photograph C1.49: Existing view from PRow AX3/4 near Castle Cottages looking southwest towards the F Route barely perceptible due to backgrounding by trees and higher ground. The route of the proposed 400kV underground cables is partly screened by intervening hedgerows and trees

A	22/03/2014	DCO SUBMISSION	JS	NH	NH
ISSUE	DATE	COMMENTS	DRAW	CHKD	APP'D

<div>Title</div> <div>NATIONAL GRID (HINKLEY POINT C CONNECTION PROJECT)</div> <div>ENVIRONMENTAL STATEMENT</div> <div>VOLUME 5.7.3</div> <div>SECTION C: PHOTOGRAPHS OF EXISTING VIEWS WITHIN 1KM</div>					
--	--	--	--	--	--

<div><div>nationalgrid</div><div>National Grid plc, Warwick Technology Park, Gallows Hill, Warwick, CV34 6DA</div></div>			
NG INVESTMENT No.	APPLICATION No.		IN
20897	EN020001		A3
FIGURE No.	DRAWING No.	SCALE	
7.8.20	IN1979.24.003	NTS	
SHEET 20 OF 27			ISSUE
			A



Photograph C1.50: Existing view from Banwell Road looking west and southwest along the F Route passing overhead becoming screened by intervening trees and towards the route of the proposed 400kV underground cables across farmland in adjacent fields



Photograph C1.51: Existing view from Banwell Road looking northeast along the F Route passing overhead filtered by roadside hedgerow and towards the route of the proposed 400kV underground cables across Castle Hill and across adjacent farmland

A	22/03/2014	DCO SUBMISSION	JS	NH	NH
ISSUE	DATE	COMMENTS	DRAW	CHK'D	APP'D
<div>Title</div> <div>NATIONAL GRID (HINKLEY POINT C CONNECTION PROJECT) ENVIRONMENTAL STATEMENT VOLUME 5.7.3</div> <div>SECTION C: PHOTOGRAPHS OF EXISTING VIEWS WITHIN 1KM</div>					
<div><div><div>nationalgrid</div><div>National Grid plc, Warwick Technology Park, Galloway Hill, Warwick, CV34 6DA</div></div></div>					
NG INVESTMENT No.		APPLICATION No.		IN	A3
20897		EN020001			
FIGURE No.		DRAWING No.		SCALE	ISSUE
7.8.21		IN1979.24.003		NTS	
SHEET 21 OF 27				A	



Photograph C1.52 Part 1: Existing view from PRow AX29/13 looking northwest and north towards the F Route partially visible above hedgerows and trees screened by rising landform and backgrounded by trees to the north. The route of the proposed 400kV underground cables is screened by rising landform and intervening hedgerows and trees



Photograph C1.52 Part 2: Existing view from PRow AX29/13 looking north towards the gap between Banwell Hill and Sanford Hill and towards the F Route and the route of the proposed 400kV underground cables screened by rising landform



Photograph C1.53: Existing view from the Strawberry Line long distance route looking west and northwest towards the F Route partly visible, backgrounding by Banwell Hill. The route of the proposed 400kV underground cables is screened by intervening field boundary hedgerow and trees

A	22/03/2014	DCO SUBMISSION	JS	NH	NH
ISSUE	DATE	COMMENTS	DRAW	CHKD	APP'D

<u>Title</u> NATIONAL GRID (HINKLEY POINT C CONNECTION PROJECT) ENVIRONMENTAL STATEMENT VOLUME 5.7.3 SECTION C: PHOTOGRAPHS OF EXISTING VIEWS WITHIN 1KM					
--	--	--	--	--	--

<div><div>nationalgrid</div><div>National Grid plc, Warwick Technology Park, Gallow's Hill, Warwick, CV34 6DA</div></div>			
NG INVESTMENT No.	APPLICATION No.		IN
20897	EN020001		A3
FIGURE No.	DRAWING No.	SCALE	
7.8.22	IN1979.24.003	NTS	
SHEET 22 OF 27			ISSUE
			A



Photograph C1.54: Existing view from PRow AX3/53 looking west towards the F Route partly visible against the sky and towards the route of the proposed 400kV underground cables is screened by intevening field boundary hedgerow and trees



Photograph C1.55: Existing view from PRow AX3/53 looking west towards the F Route partially visible above mature hedgerow. The route of the proposed 400kV underground cables is screened by intervening hedgerow and trees



Photograph C1.56: Existing view from PRow AX3/23 looking northeast towards the F Route and the N Route visible above landform and residential properties. The route of the proposed 400kV underground cables is screened from view by buildings, hedgerow and trees. The route of the proposed 400kV overhead line and the site of the proposed Sandford Substation is beyond intervening mature trees

A	22/03/2014	DCO SUBMISSION	JS	NH	NH
ISSUE	DATE	COMMENTS	DRAW	CHKD	APP'D

Title					
NATIONAL GRID (HINKLEY POINT C CONNECTION PROJECT)					
ENVIRONMENTAL STATEMENT					
VOLUME 5.7.3					
SECTION C: PHOTOGRAPHS OF EXISTING VIEWS WITHIN 1KM					

nationalgrid			
National Grid plc, Warwick Technology Park, Gallows Hill, Warwick, CV34 6DA			
NG INVESTMENT No.	APPLICATION No.		IN
20897	EN020001		A3
FIGURE No.	DRAWING No.	SCALE	
7.8.23	IN1979.24.003	NTS	
SHEET 23 OF 27			ISSUE
			A



Photograph C1.57: Existing view from PRow AX3/23 looking northeast towards the F Route running in close proximity to this PRow against the sky and towards the N Route barely perceptible due to backgrounding by higher ground beyond. The view includes the route of the proposed 400kV underground cables across sloping farmland beyond the F Route. The site of the proposed Sandford Substation and the route of the proposed 400kV and 132kV overhead lines are screened by intervening mature trees in Section D




Photograph C1.58: Existing view from Quarry Road looking northwest towards the F Route partly visible above residential properties in the foreground backgrounded by Banwell Hill. The route of the proposed 400kV underground cables is screened by intervening buildings



Photograph C1.59: Existing view from Wimblestone Road looking west towards the F Route in the Lox Yeo Valley barely perceptible due to screening by intervening residential properties and trees and due to distance. The route of the proposed 400kV underground cables is screened by intervening properties, hedgerows and trees

A	22/03/2014	DCO SUBMISSION	JS	NH	NH
ISSUE	DATE	COMMENTS	DRAW	CHKD	APP'D

Title					
NATIONAL GRID (HINKLEY POINT C CONNECTION PROJECT)					
ENVIRONMENTAL STATEMENT					
VOLUME 5.7.3					
SECTION C: PHOTOGRAPHS OF EXISTING VIEWS WITHIN 1KM					

			
National Grid plc, Warwick Technology Park, Galloway Hill, Warwick, CV34 6DA			
NG INVESTMENT No.	APPLICATION No.		IN
20897	EN020001		A3
FIGURE No.	DRAWING No.	SCALE	
7.8.24	IN1979.24.003	NTS	
SHEET 24 OF 27		ISSUE	
		A	



Photograph C1.60: Existing view from PRow AX29/66a looking northwest towards the F Route and towards the route of the proposed 400kV underground cables is screened by intervening trees



Photograph C1.61: Existing view from PRow AX25/42 looking west towards the F Route partly visible backgrounded by the wooded Banwell Hill. The route of the proposed 400kV underground cables is screened by intervening trees and properties



Photograph C1.62: Existing view from PRow AX29/68 looking north towards the F Route, the N Route and the AT Route barely perceptible due to backgrounding by the Somerset Levels and Moors. The route of the proposed 400kV underground cables is largely screened by intervening trees. The route of the proposed 400kV and 132kV overhead lines runs northwards in the view across Somerset Levels and Moors. The view includes site of the proposed Sandford substation is visible to the north of Sandford

A	22/03/2014	DCO SUBMISSION	JS	NH	NH
ISSUE	DATE	COMMENTS	DRAW	CHKD	APP'D

<u>Title</u> NATIONAL GRID (HINKLEY POINT C CONNECTION PROJECT) ENVIRONMENTAL STATEMENT VOLUME 5.7.3 SECTION C: PHOTOGRAPHS OF EXISTING VIEWS WITHIN 1KM					
--	--	--	--	--	--

<div><div></div><div><div><div></div><div></div><div></div></div><div><div></div><div></div><div></div></div><div><div></div><div></div><div></div></div></div><div><div></div><div></div><div></div></div><div><div></div><div></div><div></div></div></div> <div><div></div><div></div><div></div></div> <div><div></div><div></div><div></div></div> <div><div></div><div></div><div></div></div> <div><div></div><div></div><div></div></div> <div><div></div><div></div><div></div></div> <div><div></div><div></div><div></div></div> <div><div></div><div></div><div></div></div> <div><div></div><div></div><div></div></div> <div><div></div><div></div><div></div></div> <div><div></div><div></div><div></div></div> <div><div></div><div></div><div></div></div> <div><div></div><div></div><div></div></div> <div><div></div><div></div><div></div></div> <div><div></div><div></div><div></div></div> <div><div></div><div></div><div></div></div> <div><div></div><div></div><div></div></div> <div><div></div><div></div><div></div></div> <div><div></div><div></div><div></div></div> <div><div></div><div></div><div></div></div> <div><div></div><div></div><div></div></div> <div><div></div><div></div><div></div></div> <div><div></div><div></div><div></div></div> <div><div></div><div></div><div></div></div> <div><div></div><div></div><div></div></div> <div><div></div><div></div><div></div></div> <div><div></div><div></div><div></div></div> <div><div></div><div></div><div></div></div> <div><div></div><div></div><div></div></div> <div><div></div><div></div><div></div></div> <div><div></div><div></div><div></div></div> <div><div></div><div></div><div></div></div> <div><div></div><div></div><div></div></div> <div><div></div><div></div><div></div></div> <div><div></div><div></div><div></div></div> <div><div></div><div></div><div></div></div> <div><div></div><div></div><div></div></div> <div><div></div><div></div><div></div></div> <div><div></div><div></div><div></div></div> <div><div></div><div></div><div></div></div> <div><div></div><div></div><div></div></div> <div><div></div><div></div><div></div></div> <div><div></div><div></div><div></div></div> <div><div></div><div></div><div></div></div> <div><div></div><div></div><div></div></div> <div><div></div><div></div><div></div></div> <div><div></div><div></div><div></div></div> <div><div></div><div></div><div></div></div> <div><div></div><div></div><div></div></div> <div><div></div><div></div><div></div></div> <div><div></div><div></div><div></div></div> <div><div></div><div></div><div></div></div> <div><div></div><div></div><div></div></div> <div><div></div><div></div><div></div></div> <div><div></div><div></div><div></div></div> <div><div></div><div></div><div></div></div> <div><div></div><div></div><div></div></div> <div><div></div><div></div><div></div></div> <div><div></div><div></div><div></div></div> <div><div></div><div></div><div></div></div> <div><div></div><div></div><div></div></div> <div><div></div><div></div><div></div></div> <div><div></div><div></div><div></div></div> <div><div></div><div></div><div></div></div> <div><div></div><div></div><div></div></div> <div><div></div><div></div><div></div></div> <div><div></div><div></div><div></div></div> <div><div></div><div></div><div></div></div> <div><div></div><div></div><div></div></div> <div><div></div><div></div><div></div></div> <div><div></div><div></div><div></div></div> <div><div></div><div></div><div></div></div> <div><div></div><div></div><div></div></div> <div><div></div><div></div><div></div></div> <div><div></div><div></div><div></div></div> <div><div></div><div></div><div></div></div> <div><div></div><div></div><div></div></div> <div><div></div><div></div><div></div></div> <div><div></div><div></div><div></div></div> <div><div></div><div></div><div></div></div> <div><div></div><div></div><div></div></div> <div><div></div><div></div><div></div></div> <div><div></div><div></div><div></div></div> <div><div></div><div></div><div></div></div> <div><div></div><div></div><div></div></div> <div><div></div><div></div><div></div></div> <div><div></div><div></div><div></div></div> <div><div></div><div></div><div></div></div> <div><div></div><div></div><div></div></div> <div><div></div><div></div><div></div></div> <div><div></div><div></div><div></div></div> <div><div></div><div></div><div></div></div> <div><div></div><div></div><div></div></div> <div><div></div><div></div><div></div></div> <div><div></div><div></div><div></div></div> <div><div></div><div></div><div></div></div> <div><div></div><div></div><div></div></div> <div><div></div><div></div><div></div></div> <div><div></div><div></div><div></div></div> <div><div></div><div></div><div></div></div> <div><div></div><div></div><div></div></div> <div><div></div><div></div><div></div></div> <div><div></div><div></div><div></div></div> <div><div></div><div></div><div></div></div> <div><div></div><div></div><div></div></div> <div><div></div><div></div><div></div></div> <div><div></div><div></div><div></div></div> <div><div></div><div></div><div></div></div> <div><div></div><div></div><div></div></div> <div><div></div><div></div><div></div></div> <div><div></div><div></div><div></div></div> <div><div></div><div></div><div></div></div> <div><div></div><div></div><div></div></div> <div><div></div><div></div><div></div></div> <div><div></div><div></div><div></div></div> <div><div></div><div></div><div></div></div> <div><div></div><div></div><div></div></div> <div><div></div><div></div><div></div></div> <div><div></div><div></div><div></div></div> <div><div></div><div></div><div></div></div> <div><div></div><div></div><div></div></div> <div><div></div><div></div><div></div></div> <div><div></div><div></div><div></div></div> <div><div></div><div></div><div></div></div> <div><div></div><div></div><div></div></div> <div><div></div><div></div><div></div></div> <div><div></div><div></div><div></div></div> <div><div></div><div></div><div></div></div> <div><div></div><div></div><div></div></div> <div><div></div><div></div><div></div></div> <div><div></div><div></div><div></div></div> <div><div></div><div></div><div></div></div> <div><div></div><div></div><div></div></div> <div><div></div><div></div><div></div></div> <div><div></div><div></div><div></div></div> <div><div></div><div></div><div></div></div> <div><div></div><div></div><div></div></div> <div><div></div><div></div><div></div></div> <div><div></div><div></div><div></div></div> <div><div></div><div></div><div></div></div> <div><div></div><div></div><div></div></div> <div><div></div><div></div><div></div></div> <div><div></div><div></div><div></div></div> <div><div></div><div></div><div></div></div> <div><div></div><div></div><div></div></div> <div><div></div><div></div><div></div></div> <div><div></div><div></div><div></div></div> <div><div></div><div></div><div></div></div> <div><div></div><div></div><div></div></div> <div><div></div><div></div><div></div></div> <div><div></div><div></div><div></div></div> <div><div></div><div></div><div></div></div> <div><div></div><div></div><div></div></div> <div><div></div><div></div><div></div></div> <div><div></div><div></div><div></div></div> <div><div></div><div></div><div></div></div> <div><div></div><div></div><div></div></div> <div><div></div><div></div><div></div></div> <div><div></div><div></div><div></div></div> <div><div></div><div></div><div></div></div> <div><div></div><div></div><div></div></div> <div><div></div><div></div><div></div></div> <div><div></div><div></div><div></div></div> <div><div></div><div></div><div></div></div> <div><div></div><div></div><div></div></div> <div><div></div><div></div><div></div></div> <div><div></div><div></div><div></div></div> <div><div></div><div></div><div></div></div> <div><div></div><div></div><div></div></div> <div><div></div><div></div><div></div></div> <div><div></div><div></div><div></div></div> <div><div></div><div></div><div></div></div> <div><div></div><div></div><div></div></div> <div><div></div><div></div><div></div></div> <div><div></div><div></div><div></div></div> <div><div></div><div></div><div></div></div> <div><div></div><div></div><div></div></div> <div><div></div><div></div><div></div></div> <div><div></div><div></div><div></div></div> <div><div></div><div></div><div></div></div> <div><div></div><div></div><div></div></div> <div><div></div><div></div><div></div></div> <div><div></div><div></div><div></div></div> <div><div></div><div></div><div></div></div> <div><div></div><div></div><div></div></div> <div><div></div><div></div><div></div></div> <div><div></div><div></div><div></div></div> <div><div></div><div></div><div></div></div> <div><div></div><div></div><div></div></div> <div><div></div><div></div><div></div></div> <div><div></div><div></div><div></div></div> <div><div></div><div></div><div></div></div> <div><div></div><div></div><div></div></div> <div><div></div><div></div><div></div></div> <div><div></div><div></div><div></div></div> <div><div></div><div></div><div></div></div> <div><div></div><div></div><div></div></div> <div><div></div><div></div><div></div></div> <div><div></div><div></div><div></div></div> <div><div></div><div></div><div></div></div> <div><div></div><div></div><div></div></div> <div><div></div><div></div><div></div></div> <div><div></div><div></div><div></div></div> <div><div></div><div></div><div></div></div> <div><div></div><div></div><div></div></div> <div><div></div><div></div><div></div></div> <div><div></div><div></div><div></div></div> <div><div></div><div></div><div></div></div> <div><div></div><div></div><div></div></div> <div><div></div><div></div><div></div></div> <div><div></div><div></div><div></div></div> <div><div></div><div></div><div></div></div> <div><div></div><div></div><div></div></div> <div><div></div><div></div><div></div></div> <div><div></div><div></div><div></div></div> <div><div></div><div></div><div></div></div> <div><div></div><div></div><div></div></div> <div><div></div><div></div><div></div></div> <div><div></div><div></div><div></div></div> <div><div></div><div></div><div></div></div> <div><div></div><div></div><div></div></div> <div><div></div><div></div><div></div></div> <div><div></div><div></div><div></div></div> <div><div></div><div></div><div></div></div> <div><div></div><div></div><div></div></div> <div><div></div><div></div><div></div></div> <div><div></div><div></div><div></div></div> <div><div></div><div></div><div></div></div> <div><div></div><div></div><div></div></div> <div><div></div><div></div><div></div></div> <div><div></div><div></div><div></div></div> <div><div></div><div></div><div></div></div> <div><div></div><div></div><div></div></div> <div><div></div><div></div><div></div></div> <div><div></div><div></div><div></div></div> <div><div></div><div></div><div></div></div> <div><div></div><div></div><div></div></div> <div><div></div><div></div><div></div></div> <div><div></div><div></div><div></div></div> <div><div></div><div></div><div></div></div> <div><div></div><div></div><div></div></div> <div><div></div><div></div><div></div></div> <div><div></div><div></div><div></div></div> <div><div></div><div></div><div></div></div> <div><div></div><div></div><div></div></div> <div><div></div><div></div><div></div></div> <div><div></div><div></div><div></div></div> <div><div></div><div></div><div></div></div> <div><div></div><div></div><div></div></div> <div><div></div><div></div><div></div></div> <div><div></div><div></div><div></div></div> <div><div></div><div></div><div></div></div> <div><div></div><div></div><div></div></div> <div><div></div><div></div><div></div></div> <div><div></div><div></div><div></div></div> <div><div></div><div></div><div></div></div> <div><div></div><div></div><div></div></div> <div><div></div><div></div><div></div></div> <div><div></div><div></div><div></div></div> <div><div></div><div></</div></div>			
--	--	--	--



Photograph C1.63: Existing view from Somerville Road in Sandford looking north towards the N Route partially visible above residential properties and towards the F Route, and the route of the proposed 400kV and 132kV overhead lines largely screened by intervening properties and trees



Photograph C1.64: Existing view from the Strawberry Line long distance route on the edge of Sandford retirement village looking west and northwest towards the F Route backgrounded in part by Banwell Woods, and towards the route of the proposed 400kV underground cables partially screened by intervening hedgerow and trees



Photograph C1.65: Existing view from Towerhead Road adjacent to the driveway for a residential property (Orchard Lea) on Towerhead Road looking north and northeast along the F Route and towards the route of the proposed 400kV underground cables, west of the 132kV pylon in the foreground and partially screened by intervening hedgerow and trees

A	22/03/2014	DCO SUBMISSION	JS	NH	NH
ISSUE	DATE	COMMENTS	DRAW	CHKD	APP'D

<u>Title</u> NATIONAL GRID (HINKLEY POINT C CONNECTION PROJECT) ENVIRONMENTAL STATEMENT VOLUME 5.7.3 SECTION C: PHOTOGRAPHS OF EXISTING VIEWS WITHIN 1KM					
--	--	--	--	--	--

nationalgrid			
National Grid plc, Warwick Technology Park, Galloway Hill, Warwick, CV34 6DA			
NG INVESTMENT No.	APPLICATION No.		IN
20897	EN020001		A3
FIGURE No.	DRAWING No.	SCALE	
7.8.26	IN1979.24.003	NTS	
SHEET 26 OF 27			ISSUE
			A



Photograph C1.66: Existing view from PRow AX29/41 and AX29/78 looking northwest towards the F Route (beyond orchards, hedgerow and residential properties becoming visible in the distance against the sky) and towards the route of the proposed 400kV underground cables screened by intervening trees

A	22/03/2014	DCO SUBMISSION	JS	NH	NH
ISSUE	DATE	COMMENTS	DRAW	CHK'D	APP'D
<div>Title</div> <div>NATIONAL GRID (HINKLEY POINT C CONNECTION PROJECT) ENVIRONMENTAL STATEMENT VOLUME 5.7.3</div> <div>SECTION C: PHOTOGRAPHS OF EXISTING VIEWS WITHIN 1KM</div>					
<div><div>nationalgrid</div><div>National Grid plc, Warwick Technology Park, Galloway Hill, Warwick, CV34 6DA</div></div>					
NG INVESTMENT No.		APPLICATION No.		IN A3	
20897		EN020001			
FIGURE No.		DRAWING No.		SCALE	
7.8.27		IN1979.24.003		NTS	
SHEET 27 OF 27				ISSUE A	

Figure 7.9 - Section D: Photographs of Existing Views within 1km



Photograph D1.1: Existing view from the A368 Towerhead Road, adjacent to properties on the eastern edge of Towerhead, looking northeast across fields towards the F Route and the N Route visible above trees. The route of the proposed 400kV underground cables is visible across fields with the route of the proposed 400kV overhead line visible in the distance above trees



Photograph D1.2: Existing view from Mead Lane in Sandford looking northeast towards the N Route in the foreground. The F Route and the route of the proposed 400kV overhead line, the proposed site of the Sandford Substation and the N Route connection are visible above trees



Photograph D1.3: Existing view from the Strawberry Line long distance route (National Cycle Route 26) through an orchard west of Nye Road, looking northwest towards the N Route visible above trees. The F Route and the proposed site of the Sandford Substation, N Route connection and the route of the proposed 400kV overhead line are visible above trees to the north (to the right of the photograph)

A	22/03/2014	DCO SUBMISSION	JS	NH	NH
ISSUE	DATE	COMMENTS	DRAW	CHKD	APP'D

Title					
NATIONAL GRID (HINKLEY POINT C CONNECTION PROJECT)					
ENVIRONMENTAL STATEMENT					
VOLUME 5.7.3					
SECTION D: PHOTOGRAPHS OF EXISTING VIEWS WITHIN 1KM					

nationalgrid			
National Grid plc, Warwick Technology Park, Galloway Hill, Warwick, CV34 6DA			
NG INVESTMENT No.	APPLICATION No.		IN
20897	EN020001		A3
FIGURE No.	DRAWING No.	SCALE	
7.9.1	IN1979.24.004	NTS	
SHEET 1 OF 34			ISSUE
			A



Photograph D1.4: Existing view from Nye Road looking northwest towards the N Route. The F Route and the route of the proposed 400kV overhead line are not visible



Photograph D1.5: Existing view from Nye Road adjacent to Droveway Farm looking northwest towards Droveway Bridge. The F Route and the proposed Sandford Substation, N Route connection and route of the proposed 400kV overhead line are not visible due to screening from the boundary wall and existing vegetation



Photograph D1.6: Existing view from the Strawberry Line long distance route (National Cycle Route 26) on Droveway Bridge on Nye Road, looking west to the site of the proposed Sandford Substation adjacent, the N Route connection and the route of the proposed 400kV overhead line in the foreground. The F Route and the N Route are visible above trees and partially backgrounded by the Mendip Hills AONB



Photograph D1.7: Existing view from Drove Way looking south along the F Route towards the N Route, visible above trees, and the Mendip Hills AONB. The route of the proposed 400kV overhead line, the AT Route connection, the site of the proposed Sandford Substation and the N Route connection are visible above hedgerows and trees

A	22/03/2014	DCO SUBMISSION	JS	NH	NH
ISSUE	DATE	COMMENTS	DRAW	CHKD	APP'D

<p>Title</p> <p>NATIONAL GRID (HINKLEY POINT C CONNECTION PROJECT)</p> <p>ENVIRONMENTAL STATEMENT</p> <p>VOLUME 5.7.3</p> <p>SECTION D: PHOTOGRAPHS OF EXISTING VIEWS WITHIN 1KM</p>					
--	--	--	--	--	--

<div><div></div><div><div><div></div><div></div></div><div><div></div><div></div></div></div><div><div></div><div></div></div><div><div></div><div></div></div></div> <div><div></div><div></div></div> <div><div></div><div></div></div> <div><div></div><div></div></div> <div><div></div><div></div></div> <div><div></div><div></div></div> <div><div></div><div></div></div> <div><div></div><div></div></div> <div><div></div><div></div></div> <div><div></div><div></div></div> <div><div></div><div></div></div> <div><div></div><div></div></div> <div><div></div><div></div></div> <div><div></div><div></div></div> <div><div></div><div></div></div> <div><div></div><div></div></div> <div><div></div><div></div></div> <div><div></div><div></div></div> <div><div></div><div></div></div> <div><div></div><div></div></div> <div><div></div><div></div></div> <div><div></div><div></div></div> <div><div></div><div></div></div> <div><div></div><div></div></div> <div><div></div><div></div></div> <div><div></div><div></div></div> <div><div></div><div></div></div> <div><div></div><div></div></div> <div><div></div><div></div></div> <div><div></div><div></div></div> <div><div></div><div></div></div> <div><div></div><div></div></div> <div><div></div><div></div></div> <div><div></div><div></div></div> <div><div></div><div></div></div> <div><div></div><div></div></div> <div><div></div><div></div></div> <div><div></div><div></div></div> <div><div></div><div></div></div> <div><div></div><div></div></div> <div><div></div><div></div></div> <div><div></div><div></div></div> <div><div></div><div></div></div> <div><div></div><div></div></div> <div><div></div><div></div></div> <div><div></div><div></div></div> <div><div></div><div></div></div> <div><div></div><div></div></div> <div><div></div><div></div></div> <div><div></div><div></div></div> <div><div></div><div></div></div> <div><div></div><div></div></div> <div><div></div><div></div></div> <div><div></div><div></div></div> <div><div></div><div></div></div> <div><div></div><div></div></div> <div><div></div><div></div></div> <div><div></div><div></div></div> <div><div></div><div></div></div> <div><div></div><div></div></div> <div><div></div><div></div></div> <div><div></div><div></div></div> <div><div></div><div></div></div> <div><div></div><div></div></div> <div><div></div><div></div></div> <div><div></div><div></div></div> <div><div></div><div></div></div> <div><div></div><div></div></div> <div><div></div><div></div></div> <div><div></div><div></div></div> <div><div></div><div></div></div> <div><div></div><div></div></div> <div><div></div><div></div></div> <div><div></div><div></div></div> <div><div></div><div></div></div> <div><div></div><div></div></div> <div><div></div><div></div></div> <div><div></div><div></div></div> <div><div></div><div></div></div> <div><div></div><div></div></div> <div><div></div><div></div></div> <div><div></div><div></div></div> <div><div></div><div></div></div> <div><div></div><div></div></div> <div><div></div><div></div></div> <div><div></div><div></div></div> <div><div></div><div></div></div> <div><div></div><div></div></div> <div><div></div><div></div></div> <div><div></div><div></div></div> <div><div></div><div></div></div> <div><div></div><div></div></div> <div><div></div><div></div></div> <div><div></div><div></div></div> <div><div></div><div></div></div> <div><div></div><div></div></div> <div><div></div><div></div></div> <div><div></div><div></div></div> <div><div></div><div></div></div> <div><div></div><div></div></div> <div><div></div><div></div></div> <div><div></div><div></div></div> <div><div></div><div></div></div> <div><div></div><div></div></div> <div><div></div><div></div></div> <div><div></div><div></div></div> <div><div></div><div></div></div> <div><div></div><div></div></div> <div><div></div><div></div></div> <div><div></div><div></div></div> <div><div></div><div></div></div> <div><div></div><div></div></div> <div><div></div><div></div></div> <div><div></div><div></div></div> <div><div></div><div></div></div> <div><div></div><div></div></div> <div><div></div><div></div></div> <div><div></div><div></div></div> <div><div></div><div></div></div> <div><div></div><div></div></div> <div><div></div><div></div></div> <div><div></div><div></div></div> <div><div></div><div></div></div> <div><div></div><div></div></div> <div><div></div><div></div></div> <div><div></div><div></div></div> <div><div></div><div></div></div> <div><div></div><div></div></div> <div><div></div><div></div></div> <div><div></div><div></div></div> <div><div></div><div></div></div> <div><div></div><div></div></div> <div><div></div><div></div></div> <div><div></div><div></div></div> <div><div></div><div></div></div> <div><div></div><div></div></div> <div><div></div><div></div></div> <div><div></div><div></div></div> <div><div></div><div></div></div> <div><div></div><div></div></div> <div><div></div><div></div></div> <div><div></div><div></div></div> <div><div></div><div></div></div> <div><div></div><div></div></div> <div><div></div><div></div></div> <div><div></div><div></div></div> <div><div></div><div></div></div> <div><div></div><div></div></div> <div><div></div><div></div></div> <div><div></div><div></div></div> <div><div></div><div></div></div> <div><div></div><div></div></div> <div><div></div><div></div></div> <div><div></div><div></div></div> <div><div></div><div></div></div> <div><div></div><div></div></div> <div><div></div><div></div></div> <div><div></div><div></div></div> <div><div></div><div></div></div> <div><div></div><div></div></div> <div><div></div><div></div></div> <div><div></div><div></div></div> <div><div></div><div></div></div> <div><div></div><div></div></div> <div><div></div><div></div></div> <div><div></div><div></div></div> <div><div></div><div></div></div> <div><div></div><div></div></div> <div><div></div><div></div></div> <div><div></div><div></div></div> <div><div></div><div></div></div> <div><div></div><div></div></div> <div><div></div><div></div></div> <div><div></div><div></div></div> <div><div></div><div></div></div> <div><div></div><div></div></div> <div><div></div><div></div></div> <div><div></div><div></div></div> <div><div></div><div></div></div> <div><div></div><div></div></div> <div><div></div><div></div></div> <div><div></div><div></div></div> <div><div></div><div></div></div> <div><div></div><div></div></div> <div><div></div><div></div></div> <div><div></div><div></div></div> <div><div></div><div></div></div> <div><div></div><div></div></div> <div><div></div><div></div></div> <div><div></div><div></div></div> <div><div></div><div></div></div> <div><div></div><div></div></div> <div><div></div><div></div></div> <div><div></div><div></div></div> <div><div></div><div></div></div> <div><div></div><div></div></div> <div><div></div><div></div></div> <div><div></div><div></div></div> <div><div></div><div></div></div> <div><div></div><div></div></div> <div><div></div><div></div></div> <div><div></div><div></div></div> <div><div></div><div></div></div> <div><div></div><div></div></div> <div><div></div><div></div></div> <div><div></div><div></div></div> <div><div></div><div></div></div> <div><div></div><div></div></div> <div><div></div><div></div></div> <div><div></div><div></div></div> <div><div></div><div></div></div> <div><div></div><div></div></div> <div><div></div><div></div></div> <div><div></div><div></div></div> <div><div></div><div></div></div> <div><div></div><div></div></div> <div><div></div><div></div></div> <div><div></div><div></div></div> <div><div></div><div></div></div> <div><div></div><div></div></div> <div><div></div><div></div></div> <div><div></div><div></div></div> <div><div></div><div></div></div> <div><div></div><div></div></div> <div><div></div><div></div></div> <div><div></div><div></div></div> <div><div></div><div></div></div> <div><div></div><div></div></div> <div><div></div><div></div></div> <div><div></div><div></div></div> <div><div></div><div></div></div> <div><div></div><div></div></div> <div><div></div><div></div></div> <div><div></div><div></div></div> <div><div></div><div></div></div> <div><div></div><div></div></div> <div><div></div><div></div></div> <div><div></div><div></div></div> <div><div></div><div></div></div> <div><div></div><div></div></div> <div><div></div><div></div></div> <div><div></div><div></div></div> <div><div></div><div></div></div> <div><div></div><div></div></div> <div><div></div><div></div></div> <div><div></div><div></div></div> <div><div></div><div></div></div> <div><div></div><div></div></div> <div><div></div><div></div></div> <div><div></div><div></div></div> <div><div></div><div></div></div> <div><div></div><div></div></div> <div><div></div><div></div></div> <div><div></div><div></div></div> <div><div></div><div></div></div> <div><div></div><div></div></div> <div><div></div><div></div></div> <div><div></div><div></div></div> <div><div></div><div></div></div> <div><div></div><div></div></div> <div><div></div><div></div></div> <div><div></div><div></div></div> <div><div></div><div></div></div> <div><div></div><div></div></div> <div><div></div><div></div></div> <div><div></div><div></div></div> <div><div></div><div></div></div> <div><div></div><div></div></div> <div><div></div><div></div></div> <div><div></div><div></div></div> <div><div></div><div></div></div> <div><div></div><div></div></div> <div><div></div><div></div></div> <div><div></div><div></div></div> <div><div></div><div></div></div> <div><div></div><div></div></div> <div><div></div><div></div></div> <div><div></div><div></div></div> <div><div></div><div></div></div> <div><div></div><div></div></div> <div><div></div><div></div></div> <div><div></div><div></div></div> <div><div></div><div></div></div> <div><div></div><div></div></div> <div><div></div><div></div></div> <div><div></div><div></div></div> <div><div></div><div></div></div> <div><div></div><div></div></div> <div><div></div><div></div></div> <div><div></div><div></div></div> <div><div></div><div></div></div> <div><div></div><div></div></div> <div><div></div><div></div></div> <div><div></div><div></div></div> <div><div></div><div></div></div> <div><div></div><div></div></div> <div><div></div><div></div></div> <div><div></div><div></div></div> <div><div></div><div></div></div> <div><div></div><div></div></div> <div><div></div><div></div></div> <div><div></div><div></div></div> <div><div></div><div></div></div> <div><div></div><div></div></div> <div><div></div><div></div></div> <div><div></div><div></div></div> <div><div></div><div></div></div> <div><div></div><div></div></div> <div><div></div><div></div></div> <div><div></div><div></div></div> <div><div></div><div></div></div> <div><div></div><div></div></div> <div><div></div><div></div></div> <div><div></div><div></div></div> <div><div></div><div></div></div> <div><div></div><div></div></div> <div><div></div><div></div></div> <div><div></div><div></div></div> <div><div></div><div></div></div> <div><div></div><div></div></div> <div><div></div><div></div></div> <div><div></div><div></div></div> <div><div></div><div></div></div> <div><div></div><div></div></div> <div><div></div><div></div></div> <div><div></div><div></div></div> <div><div></div><div></div></div> <div><div></div><div></div></div> <div><div></div><div></div></div> <div><div></div><div></div></div> <div><div></div><div></div></div> <div><div></div><div></div></div> <div><div></div><div></div></div> <div><div></div><div></div></div> <div><div></div><div></div></div> <div><div></div><div></div></div> <div><div></div><div></div></div> <div><div></div><div></div></div> <div><div></div><div></div></div> <div><div></div><div></div></div> <div><div></div><div></div></div> <div><div></div><div></div></div>			
---	--	--	--



Photograph D1.8: Existing view from PRow AX29/48 looking southeast towards the proposed AT Route connection, F Route, the route of the proposed 400kV overhead line, the site of the proposed Sandford Substation and the N Route connection visible above trees and hedgerows



Photograph D1.9: Existing view from PRow AX29/48 looking north across fields towards the proposed AT Route connection with the AT Route and the F Route in the distance above trees



Photograph D1.10: Existing view from Drove Way adjacent to Nye Farm, looking northeast towards the F Route in the foreground and the route of the proposed 400kV overhead line further east above trees

A	22/03/2014	DCO SUBMISSION	JS	NH	NH
ISSUE	DATE	COMMENTS	DRAW	CHK'D	APP'D
<div>Title</div> <div>NATIONAL GRID (HINKLEY POINT C CONNECTION PROJECT) ENVIRONMENTAL STATEMENT VOLUME 5.7.3</div> <div>SECTION D: PHOTOGRAPHS OF EXISTING VIEWS WITHIN 1KM</div>					
<div><div><div>nationalgrid</div><div>National Grid plc, Warwick Technology Park, Gallows Hill, Warwick, CV34 6DA</div></div></div>					
NG INVESTMENT No.		APPLICATION No.		IN	
20897		EN020001		A3	
FIGURE No.		DRAWING No.		SCALE	
7.9.3		IN1979.24.004		NTS	
SHEET 3 OF 34				ISSUE	
				A	



Photograph D1.11: Existing view from Drove Way adjacent to Nye Farm, looking southwest across fields towards the route of the proposed AT Route connection above trees, with the F Route and the N Route visible above trees in the distance



Photograph D1.12: Existing view from adjacent to Puxton Lane near Nye, looking northwest across fields towards the AT Route with the F Route just visible in the distance above trees



Photograph D1.13: Existing view from the Strawberry Line long distance route (National Cycle Route 26) at Westbrinsea Farm looking northwest along Carditch Rhyne towards the F Route and the proposed 400kV overhead line, visible between vegetation

A	22/03/2014	DCO SUBMISSION	JS	NH	NH
ISSUE	DATE	COMMENTS	DRAW	CHKD	APP'D

<p><u>Title</u> NATIONAL GRID (HINKLEY POINT C CONNECTION PROJECT) ENVIRONMENTAL STATEMENT VOLUME 5.7.3</p> <p>SECTION D: PHOTOGRAPHS OF EXISTING VIEWS WITHIN 1KM</p>					
--	--	--	--	--	--

<div><div></div><div><div><div></div><div></div></div><div><div></div><div></div></div></div><div><div></div><div></div></div><div><div></div><div></div></div></div> <div><div></div><div></div></div> <div><div></div><div></div></div> <div><div></div><div></div></div> <div><div></div><div></div></div> <div><div></div><div></div></div> <div><div></div><div></div></div> <div><div></div><div></div></div> <div><div></div><div></div></div> <div><div></div><div></div></div> <div><div></div><div></div></div> <div><div></div><div></div></div> <div><div></div><div></div></div> <div><div></div><div></div></div> <div><div></div><div></div></div> <div><div></div><div></div></div> <div><div></div><div></div></div> <div><div></div><div></div></div> <div><div></div><div></div></div> <div><div></div><div></div></div> <div><div></div><div></div></div> <div><div></div><div></div></div> <div><div></div><div></div></div> <div><div></div><div></div></div> <div><div></div><div></div></div> <div><div></div><div></div></div> <div><div></div><div></div></div> <div><div></div><div></div></div> <div><div></div><div></div></div> <div><div></div><div></div></div> <div><div></div><div></div></div> <div><div></div><div></div></div> <div><div></div><div></div></div> <div><div></div><div></div></div> <div><div></div><div></div></div> <div><div></div><div></div></div> <div><div></div><div></div></div> <div><div></div><div></div></div> <div><div></div><div></div></div> <div><div></div><div></div></div> <div><div></div><div></div></div> <div><div></div><div></div></div> <div><div></div><div></div></div> <div><div></div><div></div></div> <div><div></div><div></div></div> <div><div></div><div></div></div> <div><div></div><div></div></div> <div><div></div><div></div></div> <div><div></div><div></div></div> <div><div></div><div></div></div> <div><div></div><div></div></div> <div><div></div><div></div></div> <div><div></div><div></div></div> <div><div></div><div></div></div> <div><div></div><div></div></div> <div><div></div><div></div></div> <div><div></div><div></div></div> <div><div></div><div></div></div> <div><div></div><div></div></div> <div><div></div><div></div></div> <div><div></div><div></div></div> <div><div></div><div></div></div> <div><div></div><div></div></div> <div><div></div><div></div></div> <div><div></div><div></div></div> <div><div></div><div></div></div> <div><div></div><div></div></div> <div><div></div><div></div></div> <div><div></div><div></div></div> <div><div></div><div></div></div> <div><div></div><div></div></div> <div><div></div><div></div></div> <div><div></div><div></div></div> <div><div></div><div></div></div> <div><div></div><div></div></div> <div><div></div><div></div></div> <div><div></div><div></div></div> <div><div></div><div></div></div> <div><div></div><div></div></div> <div><div></div><div></div></div> <div><div></div><div></div></div> <div><div></div><div></div></div> <div><div></div><div></div></div> <div><div></div><div></div></div> <div><div></div><div></div></div> <div><div></div><div></div></div> <div><div></div><div></div></div> <div><div></div><div></div></div> <div><div></div><div></div></div> <div><div></div><div></div></div> <div><div></div><div></div></div> <div><div></div><div></div></div> <div><div></div><div></div></div> <div><div></div><div></div></div> <div><div></div><div></div></div> <div><div></div><div></div></div> <div><div></div><div></div></div> <div><div></div><div></div></div> <div><div></div><div></div></div> <div><div></div><div></div></div> <div><div></div><div></div></div> <div><div></div><div></div></div> <div><div></div><div></div></div> <div><div></div><div></div></div> <div><div></div><div></div></div> <div><div></div><div></div></div> <div><div></div><div></div></div> <div><div></div><div></div></div> <div><div></div><div></div></div> <div><div></div><div></div></div> <div><div></div><div></div></div> <div><div></div><div></div></div> <div><div></div><div></div></div> <div><div></div><div></div></div> <div><div></div><div></div></div> <div><div></div><div></div></div> <div><div></div><div></div></div> <div><div></div><div></div></div> <div><div></div><div></div></div> <div><div></div><div></div></div> <div><div></div><div></div></div> <div><div></div><div></div></div> <div><div></div><div></div></div> <div><div></div><div></div></div> <div><div></div><div></div></div> <div><div></div><div></div></div> <div><div></div><div></div></div> <div><div></div><div></div></div> <div><div></div><div></div></div> <div><div></div><div></div></div> <div><div></div><div></div></div> <div><div></div><div></div></div> <div><div></div><div></div></div> <div><div></div><div></div></div> <div><div></div><div></div></div> <div><div></div><div></div></div> <div><div></div><div></div></div> <div><div></div><div></div></div> <div><div></div><div></div></div> <div><div></div><div></div></div> <div><div></div><div></div></div> <div><div></div><div></div></div> <div><div></div><div></div></div> <div><div></div><div></div></div> <div><div></div><div></div></div> <div><div></div><div></div></div> <div><div></div><div></div></div> <div><div></div><div></div></div> <div><div></div><div></div></div> <div><div></div><div></div></div> <div><div></div><div></div></div> <div><div></div><div></div></div> <div><div></div><div></div></div> <div><div></div><div></div></div> <div><div></div><div></div></div> <div><div></div><div></div></div> <div><div></div><div></div></div> <div><div></div><div></div></div> <div><div></div><div></div></div> <div><div></div><div></div></div> <div><div></div><div></div></div> <div><div></div><div></div></div> <div><div></div><div></div></div> <div><div></div><div></div></div> <div><div></div><div></div></div> <div><div></div><div></div></div> <div><div></div><div></div></div> <div><div></div><div></div></div> <div><div></div><div></div></div> <div><div></div><div></div></div> <div><div></div><div></div></div> <div><div></div><div></div></div> <div><div></div><div></div></div> <div><div></div><div></div></div> <div><div></div><div></div></div> <div><div></div><div></div></div> <div><div></div><div></div></div> <div><div></div><div></div></div> <div><div></div><div></div></div> <div><div></div><div></div></div> <div><div></div><div></div></div> <div><div></div><div></div></div> <div><div></div><div></div></div> <div><div></div><div></div></div> <div><div></div><div></div></div> <div><div></div><div></div></div> <div><div></div><div></div></div> <div><div></div><div></div></div> <div><div></div><div></div></div> <div><div></div><div></div></div> <div><div></div><div></div></div> <div><div></div><div></div></div> <div><div></div><div></div></div> <div><div></div><div></div></div> <div><div></div><div></div></div> <div><div></div><div></div></div> <div><div></div><div></div></div> <div><div></div><div></div></div> <div><div></div><div></div></div> <div><div></div><div></div></div> <div><div></div><div></div></div> <div><div></div><div></div></div> <div><div></div><div></div></div> <div><div></div><div></div></div> <div><div></div><div></div></div> <div><div></div><div></div></div> <div><div></div><div></div></div> <div><div></div><div></div></div> <div><div></div><div></div></div> <div><div></div><div></div></div> <div><div></div><div></div></div> <div><div></div><div></div></div> <div><div></div><div></div></div> <div><div></div><div></div></div> <div><div></div><div></div></div> <div><div></div><div></div></div> <div><div></div><div></div></div> <div><div></div><div></div></div> <div><div></div><div></div></div> <div><div></div><div></div></div> <div><div></div><div></div></div> <div><div></div><div></div></div> <div><div></div><div></div></div> <div><div></div><div></div></div> <div><div></div><div></div></div> <div><div></div><div></div></div> <div><div></div><div></div></div> <div><div></div><div></div></div> <div><div></div><div></div></div> <div><div></div><div></div></div> <div><div></div><div></div></div> <div><div></div><div></div></div> <div><div></div><div></div></div> <div><div></div><div></div></div> <div><div></div><div></div></div> <div><div></div><div></div></div> <div><div></div><div></div></div> <div><div></div><div></div></div> <div><div></div><div></div></div> <div><div></div><div></div></div> <div><div></div><div></div></div> <div><div></div><div></div></div> <div><div></div><div></div></div> <div><div></div><div></div></div> <div><div></div><div></div></div> <div><div></div><div></div></div> <div><div></div><div></div></div> <div><div></div><div></div></div> <div><div></div><div></div></div> <div><div></div><div></div></div> <div><div></div><div></div></div> <div><div></div><div></div></div> <div><div></div><div></div></div> <div><div></div><div></div></div> <div><div></div><div></div></div> <div><div></div><div></div></div> <div><div></div><div></div></div> <div><div></div><div></div></div> <div><div></div><div></div></div> <div><div></div><div></div></div> <div><div></div><div></div></div> <div><div></div><div></div></div> <div><div></div><div></div></div> <div><div></div><div></div></div> <div><div></div><div></div></div> <div><div></div><div></div></div> <div><div></div><div></div></div> <div><div></div><div></div></div> <div><div></div><div></div></div> <div><div></div><div></div></div> <div><div></div><div></div></div> <div><div></div><div></div></div> <div><div></div><div></div></div> <div><div></div><div></div></div> <div><div></div><div></div></div> <div><div></div><div></div></div> <div><div></div><div></div></div> <div><div></div><div></div></div> <div><div></div><div></div></div> <div><div></div><div></div></div> <div><div></div><div></div></div> <div><div></div><div></div></div> <div><div></div><div></div></div> <div><div></div><div></div></div> <div><div></div><div></div></div> <div><div></div><div></div></div> <div><div></div><div></div></div> <div><div></div><div></div></div> <div><div></div><div></div></div> <div><div></div><div></div></div> <div><div></div><div></div></div> <div><div></div><div></div></div> <div><div></div><div></div></div> <div><div></div><div></div></div> <div><div></div><div></div></div> <div><div></div><div></div></div> <div><div></div><div></div></div> <div><div></div><div></div></div> <div><div></div><div></div></div> <div><div></div><div></div></div> <div><div></div><div></div></div> <div><div></div><div></div></div> <div><div></div><div></div></div> <div><div></div><div></div></div> <div><div></div><div></div></div> <div><div></div><div></div></div> <div><div></div><div></div></div> <div><div></div><div></div></div> <div><div></div><div></div></div> <div><div></div><div></div></div> <div><div></div><div></div></div> <div><div></div><div></div></div> <div><div></div><div></div></div> <div><div></div><div></div></div> <div><div></div><div></div></div> <div><div></div><div></div></div> <div><div></div><div></div></div> <div><div></div><div></div></div> <div><div></div><div></div></div> <div><div></div><div></div></div> <div><div></div><div></div></div> <div><div></div><div></div></div> <div><div></div><div></div></div> <div><div></div><div></div></div> <div><div></div><div></div></div> <div><div></div><div></div></div> <div><div></div><div></div></div> <div><div></div><div></div></div> <div><div></div><div></div></div> <div><div></div><div></div></div> <div><div></div><div></div></div> <div><div></div><div></div></div> <div><div></div><div></div></div> <div><div></div><div></div></div> <div><div></div><div></div></div> <div><div></div><div></div></div> <div><div></div><div></div></div> <div><div></div><div></div></div> <div><div></div><div></div></div> <div><div></div><div></div></div> <div><div></div><div></div></div> <div><div></div><div></div></div> <div><div></div><div></div></div> <div><div></div><div></div></div> <div><div></div><div></div></div> <div><div></div><div></div></div> <div><div></div><div></div></div> <div><div></div><div></div></div> <div><div></div><div></div></div> <div><div></div><div></div></div> <div><div></div><div></div></div> <div><div></div><div></div></div> <div><div></div><div></div></div> <div><div></div><div></div></div> <div><div></div><div></div></div> <div><div></div><div></div></div> <div><div></div><div></div></div> <div><div></div><div></div></div> <div><div></div><div></div></div> <div><div></div><div></div></div> <div><div></div><div></div></div> <div><div></div><div></div></div> <div><div></div><div></div></div> <div><div></div><div></div></div> <div><div></</div></div>			
---	--	--	--



Photograph D1.14: Existing view from Puxton Road through East Rolstone, looking southeast across fields towards the route of the proposed AT Route connection, with a single AT Route pylon just visible above trees. The F Route and the route of the proposed 400kV overhead line are screened by trees



Photograph D1.15: Existing view from PRow AX3/43 near Box Bush Lane on the eastern edge of East Rolstone, looking northeast towards the AT Route and the route of the proposed AT Route connection. The F Route and the route of the proposed 400kV overhead line are not visible due to tree screening



Photograph D1.16: Existing view from PRow AX24/10 near Puxton Moor Farm, looking south towards the AT Route visible above trees and hedgerows and towards the route of the proposed AT Route connection

A	22/03/2014	DCO SUBMISSION	JS	NH	NH
ISSUE	DATE	COMMENTS	DRAW	CHKD	APP'D

<u>Title</u> NATIONAL GRID (HINKLEY POINT C CONNECTION PROJECT) ENVIRONMENTAL STATEMENT VOLUME 5.7.3 SECTION D: PHOTOGRAPHS OF EXISTING VIEWS WITHIN 1KM					
--	--	--	--	--	--

<div><div><div><div><div></div><div></div></div><div><div></div><div></div></div></div><div><div><div></div><div></div></div><div><div></div><div></div></div></div><div><div><div></div><div></div></div><div><div></div><div></div></div></div><div><div><div></div><div></div></div><div><div></div><div></div></div></div><div><div><div></div><div></div></div><div><div></div><div></div></div></div></div><div><div><div></div><div></div></div><div><div></div><div></div></div></div><div><div><div></div><div></div></div><div><div></div><div></div></div></div></div> <div><div><div></div><div></div></div><div><div></div><div></div></div></div> <div><div><div></div><div></div></div><div><div></div><div></div></div></div> <div><div><div></div><div></div></div><div><div></div><div></div></div></div> <div><div><div></div><div></div></div><div><div></div><div></div></div></div> <div><div><div></div><div></div></div><div><div></div><div></div></div></div> <div><div><div></div><div></div></div><div><div></div><div></div></div></div> <div><div><div></div><div></div></div><div><div></div><div></div></div></div> <div><div><div></div><div></div></div><div><div></div><div></div></div></div> <div><div><div></div><div></div></div><div><div></div><div></div></div></div> <div><div><div></div><div></div></div><div><div></div><div></div></div></div> <div><div><div></div><div></div></div><div><div></div><div></div></div></div> <div><div><div></div><div></div></div><div><div></div><div></div></div></div> <div><div><div></div><div></div></div><div><div></div><div></div></div></div> <div><div><div></div><div></div></div><div><div></div><div></div></div></div> <div><div><div></div><div></div></div><div><div></div><div></div></div></div> <div><div><div></div><div></div></div><div><div></div><div></div></div></div> <div><div><div></div><div></div></div><div><div></div><div></div></div></div> <div><div><div></div><div></div></div><div><div></div><div></div></div></div> <div><div><div></div><div></div></div><div><div></div><div></div></div></div> <div><div><div></div><div></div></div><div><div></div><div></div></div></div> <div><div><div></div><div></div></div><div><div></div><div></div></div></div> <div><div><div></div><div></div></div><div><div></div><div></div></div></div> <div><div><div></div><div></div></div><div><div></div><div></div></div></div> <div><div><div></div><div></div></div><div><div></div><div></div></div></div> <div><div><div></div><div></div></div><div><div></div><div></div></div></div> <div><div><div></div><div></div></div><div><div></div><div></div></div></div> <div><div><div></div><div></div></div><div><div></div><div></div></div></div> <div><div><div></div><div></div></div><div><div></div><div></div></div></div> <div><div><div></div><div></div></div><div><div></div><div></div></div></div> <div><div><div></div><div></div></div><div><div></div><div></div></div></div> <div><div><div></div><div></div></div><div><div></div><div></div></div></div> <div><div><div></div><div></div></div><div><div></div><div></div></div></div> <div><div><div></div><div></div></div><div><div></div><div></div></div></div> <div><div><div></div><div></div></div><div><div></div><div></div></div></div> <div><div><div></div><div></div></div><div><div></div><div></div></div></div> <div><div><div></div><div></div></div><div><div></div><div></div></div></div> <div><div><div></div><div></div></div><div><div></div><div></div></div></div> <div><div><div></div><div></div></div><div><div></div><div></div></div></div> <div><div><div></div><div></div></div><div><div></div><div></div></div></div> <div><div><div></div><div></div></div><div><div></div><div></div></div></div> <div><div><div></div><div></div></div><div><div></div><div></div></div></div> <div><div><div></div><div></div></div><div><div></div><div></div></div></div> <div><div><div></div><div></div></div><div><div></div><div></div></div></div> <div><div><div></div><div></div></div><div><div></div><div></div></div></div> <div><div><div></div><div></div></div><div><div></div><div></div></div></div> <div><div><div></div><div></div></div><div><div></div><div></div></div></div> <div><div><div></div><div></div></div><div><div></div><div></div></div></div> <div><div><div></div><div></div></div><div><div></div><div></div></div></div> <div><div><div></div><div></div></div><div><div></div><div></div></div></div> <div><div><div></div><div></div></div><div><div></div><div></div></div></div> <div><div><div></div><div></div></div><div><div></div><div></div></div></div> <div><div><div></div><div></div></div><div><div></div><div></div></div></div> <div><div><div></div><div></div></div><div><div></div><div></div></div></div> <div><div><div></div><div></div></div><div><div></div><div></div></div></div> <div><div><div></div><div></div></div><div><div></div><div></div></div></div> <div><div><div></div><div></div></div><div><div></div><div></div></div></div> <div><div><div></div><div></div></div><div><div></div><div></div></div></div> <div><div><div></div><div></div></div><div><div></div><div></div></div></div> <div><div><div></div><div></div></div><div><div></div><div></div></div></div> <div><div></div></div>			
--	--	--	--



Photograph D1.17: Existing view from PRow AX24/6 on Puxton Moor Lane, looking east across Puxton Moor along the AT Route to the connection to the F Route visible above trees



Photograph D1.18: Existing view from PRow AX24/8 south of Church of St Saviour in Puxton, looking southeast towards the AT Route and the route of the proposed AT Route connection



Photograph D1.19: Existing view from Maysgreen Lane looking southeast across fields with the AT Route and the proposed route of the AT Route connection visible in places above trees and hedgerows

A	22/03/2014	DCO SUBMISSION	JS	NH	NH
ISSUE	DATE	COMMENTS	DRAW	CHKD	APP'D

<u>Title</u> NATIONAL GRID (HINKLEY POINT C CONNECTION PROJECT) ENVIRONMENTAL STATEMENT VOLUME 5.7.3 SECTION D: PHOTOGRAPHS OF EXISTING VIEWS WITHIN 1KM					
--	--	--	--	--	--

nationalgrid <small>National Grid plc, Warwick Technology Park, Gallows Hill, Warwick, CV34 6DA</small>				
NG INVESTMENT No.	APPLICATION No.		IN	
20897	EN020001		A3	
FIGURE No.	DRAWING No.		SCALE NTS	
7.9.6	IN1979.24.004		ISSUE A	
SHEET 6 OF 34				



Photograph D1.20 (Part 1): Existing view from PRow AX24/4 along Oldbridge River northeast of Puxton, looking east across fields with the F Route and the route of the proposed 400kV overhead line visible in places above hedgerows and trees



Photograph D1.20 (Part 2): Existing view from PRow AX24/4 along Oldbridge River southeast of Puxton, looking east across fields with the F Route and the route of the proposed 400kV overhead line visible in places above hedgerows and trees



Photograph D1.21: Existing view from PRow AX16/22 on Dolemoor Lane south of Hewish, looking north along the F Route and the route of the proposed 400kV overhead line

A	22/03/2014	DCO SUBMISSION	JS	NH	NH
ISSUE	DATE	COMMENTS	DRAW	CHK'D	APP'D
<div>Title</div> <div>NATIONAL GRID (HINKLEY POINT C CONNECTION PROJECT) ENVIRONMENTAL STATEMENT VOLUME 5.7.3</div> <div>SECTION D: PHOTOGRAPHS OF EXISTING VIEWS WITHIN 1KM</div>					
<div><div>nationalgrid</div><div>National Grid plc, Warwick Technology Park, Galloway Hill, Warwick, CV34 6DA</div></div>					
NG INVESTMENT No.		APPLICATION No.		IN	
20897		EN020001		A3	
FIGURE No.		DRAWING No.		SCALE	
7.9.7		IN1979.24.004		NTS	
SHEET 7 OF 34				ISSUE	
				A	



Photograph D1.22: Existing view from PRoW AX16/21 on Dolemoor Lane, adjacent to properties, looking west towards the F Route and the route of the proposed 400kV overhead line visible above hedgerows and trees



Photograph D1.23: Existing view along Weston Road looking northwest with the F Route and the route of the proposed 400kV overhead line visible above trees and hedgerows in the distance



Photograph D1.24: Existing view from the entrance to Parsons Scrap on the A370 Weston Road looking southwest towards the F Route and the route of the proposed 400kV overhead line

A	22/03/2014	DCO SUBMISSION	JS	NH	NH
ISSUE	DATE	COMMENTS	DRAW	CHK'D	APP'D
<div>Title</div> <div>NATIONAL GRID (HINKLEY POINT C CONNECTION PROJECT) ENVIRONMENTAL STATEMENT VOLUME 5.7.3</div> <div>SECTION D: PHOTOGRAPHS OF EXISTING VIEWS WITHIN 1KM</div>					
<div><div>nationalgrid</div><div>National Grid plc, Warwick Technology Park, Gallows Hill, Warwick, CV34 6DA</div></div>					
NG INVESTMENT No.	APPLICATION No.		IN		
20897	EN020001		A3		
FIGURE No.	DRAWING No.	SCALE		NTS	
7.9.8	IN1979.24.004				
SHEET 8 OF 34				ISSUE	
				A	



Photograph D1.25: Existing view from the track parallel to the A370 Weston Road east of Heathgate Farm, looking southeast towards Moorland Park with the route of the proposed 400kV overhead line and the F Route visible above landform and trees



Photograph D1.26: Existing view from Weston Road near Pool Farm, looking east with the route of the proposed 400kV overhead line and the F Route visible in places above hedgerows, trees and buildings



Photograph D1.27 (Part 1): Existing view from PRow LA21/28 looking east towards the route of the proposed 400kV overhead line and the F Route visible above hedgerows and trees and backgrounded in places by hills in the distance

A	22/03/2014	DCO SUBMISSION	JS	NH	NH
ISSUE	DATE	COMMENTS	DRAW	CHKD	APP'D

<u>Title</u> NATIONAL GRID (HINKLEY POINT C CONNECTION PROJECT) ENVIRONMENTAL STATEMENT VOLUME 5.7.3 SECTION D: PHOTOGRAPHS OF EXISTING VIEWS WITHIN 1KM					
--	--	--	--	--	--



Photograph D1.27 (Part 2): Existing view from PRow LA21/28 looking southeast along Congresbury Yeo towards Pilhay Farm, with the route of the proposed 400kV overhead line and the F Route visible above hedgerows and trees and backgrounded in places by hills in the distance



Photograph D1.28 (Part 1): Existing view from Wemberham Lane near Riverside Farm, looking northeast along the route of the proposed 400kV overhead line and the F Route visible above hedgerows and trees and backgrounded in places by hills in the distance



Photograph D1.28 (Part 2): Existing view from Wemberham Lane near Riverside Farm, looking southeast towards the route of the proposed 400kV overhead line and the F Route visible above hedgerows and trees and backgrounded in places by hills in the distance

A	22/03/2014	DCO SUBMISSION	JS	NH	NH
ISSUE	DATE	COMMENTS	DRAW	CHKD	APP'D

<u>Title</u> NATIONAL GRID (HINKLEY POINT C CONNECTION PROJECT) ENVIRONMENTAL STATEMENT VOLUME 5.7.3 SECTION D: PHOTOGRAPHS OF EXISTING VIEWS WITHIN 1KM					
--	--	--	--	--	--

<div><div><div><div><div></div><div></div></div><div><div></div><div></div></div></div><div><div><div></div><div></div></div><div><div></div><div></div></div></div><div><div><div></div><div></div></div><div><div></div><div></div></div></div><div><div><div></div><div></div></div><div><div></div><div></div></div></div></div><div><div><div></div><div></div></div><div><div></div><div></div></div></div><div><div><div></div><div></div></div><div><div></div><div></div></div></div></div> <div><div><div></div><div></div></div><div><div></div><div></div></div></div> <div><div><div></div><div></div></div><div><div></div><div></div></div></div> <div><div><div></div><div></div></div><div><div></div><div></div></div></div> <div><div><div></div><div></div></div><div><div></div><div></div></div></div> <div><div><div></div><div></div></div><div><div></div><div></div></div></div> <div><div><div></div><div></div></div><div><div></div><div></div></div></div> <div><div><div></div><div></div></div><div><div></div><div></div></div></div> <div><div><div></div><div></div></div><div><div></div><div></div></div></div> <div><div><div></div><div></div></div><div><div></div><div></div></div></div> <div><div><div></div><div></div></div><div><div></div><div></div></div></div> <div><div><div></div><div></div></div><div><div></div><div></div></div></div> <div><div><div></div><div></div></div><div><div></div><div></div></div></div> <div><div><div></div><div></div></div><div><div></div><div></div></div></div> <div><div><div></div><div></div></div><div><div></div><div></div></div></div> <div><div><div></div><div></div></div><div><div></div><div></div></div></div> <div><div><div></div><div></div></div><div><div></div><div></div></div></div> <div><div><div></div><div></div></div><div><div></div><div></div></div></div> <div><div><div></div><div></div></div><div><div></div><div></div></div></div> <div><div><div></div><div></div></div><div><div></div><div></div></div></div> <div><div><div></div><div></div></div><div><div></div><div></div></div></div> <div><div><div></div><div></div></div><div><div></div><div></div></div></div> <div><div><div></div><div></div></div><div><div></div><div></div></div></div> <div><div><div></div><div></div></div><div><div></div><div></div></div></div> <div><div><div></div><div></div></div><div><div></div><div></div></div></div> <div><div><div></div><div></div></div><div><div></div><div></div></div></div> <div><div><div></div><div></div></div><div><div></div><div></div></div></div> <div><div><div></div><div></div></div><div><div></div><div></div></div></div> <div><div><div></div><div></div></div><div><div></div><div></div></div></div> <div><div><div></div><div></div></div><div><div></div><div></div></div></div> <div><div><div></div><div></div></div><div><div></div><div></div></div></div> <div><div><div></div><div></div></div><div><div></div><div></div></div></div> <div><div><div></div><div></div></div><div><div></div><div></div></div></div> <div><div><div></div><div></div></div><div><div></div><div></div></div></div> <div><div><div></div><div></div></div><div><div></div><div></div></div></div> <div><div><div></div><div></div></div><div><div></div><div></div></div></div> <div><div><div></div><div></div></div><div><div></div><div></div></div></div> <div><div><div></div><div></div></div><div><div></div><div></div></div></div> <div><div><div></div><div></div></div><div><div></div><div></div></div></div> <div><div><div></div><div></div></div><div><div></div><div></div></div></div> <div><div><div></div><div></div></div><div><div></div><div></div></div></div> <div><div><div></div><div></div></div><div><div></div><div></div></div></div> <div><div><div></div><div></div></div><div><div></div><div></div></div></div> <div><div><div></div><div></div></div><div><div></div><div></div></div></div> <div><div><div></div><div></div></div><div><div></div><div></div></div></div> <div><div><div></div><div></div></div><div><div></div><div></div></div></div> <div><div><div></div><div></div></div><div><div></div><div></div></div></div> <div><div><div></div><div></div></div><div><div></div><div></div></div></div> <div><div><div></div><div></div></div><div><div></div><div></div></div></div> <div><div><div></div><div></div></div><div><div></div><div></div></div></div> <div><div><div></div><div></div></div><div><div></div><div></div></div></div> <div><div><div></div><div></div></div><div><div></div><div></div></div></div> <div><div><div></div><div></div></div><div><div></div><div></div></div></div> <div><div><div></div><div></div></div><div><div></div><div></div></div></div> <div><div><div></div><div></div></div><div><div></div><div></div></div></div> <div><div><div></div><div></div></div><div><div></div><div></div></div></div> <div><div><div></div><div></div></div><div><div></div><div></div></div></div> <div><div><div></div><div></div></div><div><div></div><div></div></div></div> <div><div><div></div><div></div></div><div><div></div><div></div></div></div> <div><div><div></div><div></div></div><div><div></div><div></div></div></div> <div><div><div></div><div></div></div><div><div></div><div></div></div></div> <			
--	--	--	--



Photograph D1.29: Existing view from Wemberham Lane near properties on the edge of Yatton, looking southwest along the road towards the F Route and the route of the proposed 400kV overhead line visible above trees



Photograph D1.30 (Part 1): Existing view from Arnold's Way adjacent to properties on the edge of Yatton, looking southwest along the road and across fields with the F Route and the route of the proposed 400kV overhead line visible in places above hedgerows, trees and buildings



Photograph D1.30 (Part 2): Existing view from Arnold's Way adjacent to properties on the edge of Yatton, looking northwest across fields with the F Route and the route of the proposed 400kV overhead line visible in the distance above trees

A	22/03/2014	DCO SUBMISSION	JS	NH	NH
ISSUE	DATE	COMMENTS	DRAW	CHKD	APP'D

<u>Title</u> NATIONAL GRID (HINKLEY POINT C CONNECTION PROJECT) ENVIRONMENTAL STATEMENT VOLUME 5.7.3 SECTION D: PHOTOGRAPHS OF EXISTING VIEWS WITHIN 1KM					
--	--	--	--	--	--



Photograph D1.31: Existing view from PRow LA21/31 southeast of North End, looking southwest across fields towards the F Route and the route of the proposed 400kV overhead line visible above hedgerows and trees



Photograph D1.32: Existing view from PRow LA21/31 looking northwest across Little River and fields towards the F Route and the route of the proposed 400kV overhead line visible above hedgerows and trees



Photograph D1.33: Existing view from PRow LA21/31, looking northeast along the PRow and Little River towards the route of the proposed 400kV overhead line and the F Route, visible above hedgerows and trees and backgrounded in places by hills in the distance

A	22/03/2014	DCO SUBMISSION	JS	NH	NH
ISSUE	DATE	COMMENTS	DRAW	CHK'D	APP'D
<div>Title</div> <div>NATIONAL GRID (HINKLEY POINT C CONNECTION PROJECT) ENVIRONMENTAL STATEMENT VOLUME 5.7.3</div> <div>SECTION D: PHOTOGRAPHS OF EXISTING VIEWS WITHIN 1KM</div>					
<div><div><div>nationalgrid</div></div><div>National Grid plc, Warwick Technology Park, Galloway Hill, Warwick, CV34 6DA</div></div>					
NG INVESTMENT No.		APPLICATION No.		IN A3	
20897		EN020001			
FIGURE No.		DRAWING No.		SCALE	
7.9.12		IN1979.24.004		NTS	
SHEET 12 OF 34				ISSUE	
				A	



Photograph D1.34: Existing view from PRow LA11/4 in Kingston Seymour Church cemetery, looking southeast between properties and across fields with the route of the proposed 400kV overhead line and the F Route screened by trees and vegetation



Photograph D1.35: Existing view from Back Lane near Kingston Seymour, looking east across fields towards the route of the proposed 400kV overhead line and the F Route visible in the distance above hedgerows and trees and partially backgrounded by hills



Photograph D1.36: Existing view from Lampley Road between Kingston Seymour and North End looking northeast towards the route of the proposed 400kV overhead line and the F Route

A	22/03/2014	DCO SUBMISSION	JS	NH	NH
ISSUE	DATE	COMMENTS	DRAW	CHKD	APP'D

<u>Title</u> NATIONAL GRID (HINKLEY POINT C CONNECTION PROJECT) ENVIRONMENTAL STATEMENT VOLUME 5.7.3 SECTION D: PHOTOGRAPHS OF EXISTING VIEWS WITHIN 1KM					
--	--	--	--	--	--



Photograph D1.37: Existing view from Lampley Road near Bridgefoot Farm, looking southwest along the road towards properties with the F Route and the route of the proposed 400kV overhead line visible above buildings, hedgerows and trees



Photograph D1.38: Existing view from the B3133 North End Road near The Bridge Inn looking north across fields towards the F Route and the route of the proposed 400kV overhead line visible above trees and hedgerows



Photograph D1.39: Existing view from Kenn Road near Oaklands Farm, looking south towards the proposed 400kV overhead line and the F Route visible above farm buildings and passing over the road

A	22/03/2014	DCO SUBMISSION	JS	NH	NH
ISSUE	DATE	COMMENTS	DRAW	CHKD	APP'D

Title

NATIONAL GRID (HINKLEY POINT C CONNECTION PROJECT)

ENVIRONMENTAL STATEMENT

VOLUME 5.7.3

SECTION D: PHOTOGRAPHS OF EXISTING VIEWS WITHIN 1KM

nationalgrid		National Grid plc, Warwick Technology Park, Galloway Hill, Warwick, CV34 6DA	
NG INVESTMENT No.	APPLICATION No.		IN
20897	EN020001		A3
FIGURE No.	DRAWING No.	SCALE	ISSUE
7.9.14	IN1979.24.004	NTS	A
SHEET 14 OF 34			



Photograph D1.40: Existing view from properties on Kenn Road near Rust Lane, looking southeast over roadside hedgerow towards the route of the proposed 400kV overhead line and the F Route just visible in the distance above trees and background hills



Photograph D1.41: Existing view from PRow LA10/2 looking southeast across fields towards the route of the proposed 400kV overhead line and the F Route visible above trees



Photograph D1.42: Existing view from PRow LA10/3 south of Kenn, looking southeast across fields with the route of the proposed 400kV overhead line and the F Route just visible above trees in the distance

A	22/03/2014	DCO SUBMISSION	JS	NH	NH
ISSUE	DATE	COMMENTS	DRAW	CHK'D	APP'D
<div>Title</div> <div>NATIONAL GRID (HINKLEY POINT C CONNECTION PROJECT) ENVIRONMENTAL STATEMENT VOLUME 5.7.3</div> <div>SECTION D: PHOTOGRAPHS OF EXISTING VIEWS WITHIN 1KM</div>					
<div><div>nationalgrid</div><div>National Grid plc, Warwick Technology Park, Gallows Hill, Warwick, CV34 6DA</div></div>					
NG INVESTMENT No.		APPLICATION No.		IN	
20897		EN020001		A3	
FIGURE No.		DRAWING No.		SCALE	
7.9.15		IN1979.24.004		NTS	
SHEET 15 OF 34				ISSUE	
				A	



Photograph D1.43: Existing view from Kenn Street near the junction with Kennmoor Road on the eastern edge of Kenn, looking south towards the route of the proposed 400kV overhead line and the F Route just visible in the distance above hedgerows, trees and buildings



Photograph D1.44: Existing view from National Cycle Route 26 on Kennmoor Road, adjacent to Manor Farm, looking northeast along the F Route and the route of the proposed 400kV overhead line across Kenn Moor



Photograph D1.45: Existing view from National Cycle Route 26 on Kennmoor Road, looking southwest across fields towards Rose Bungalow and along the F Route and the route of the proposed 400kV overhead line visible above trees

A	22/03/2014	DCO SUBMISSION	JS	NH	NH
ISSUE	DATE	COMMENTS	DRAW	CHKD	APP'D

Title

NATIONAL GRID (HINKLEY POINT C
CONNECTION PROJECT)
ENVIRONMENTAL STATEMENT
VOLUME 5.7.3

SECTION D: PHOTOGRAPHS OF EXISTING
VIEWS WITHIN 1KM

</



Photograph D1.46: Existing view from National Cycle Route 26 on Kennmoor Road, near the junction with Ham Lane, looking north along the road and across fields with the route of the proposed 400kV overhead line and the F Route visible in the distance above trees



Photograph D1.47: Existing view from Claverham Drove, looking northwest across the Moors with the route of the proposed 400kV overhead line and the F Route just visible in the distance above trees, with the F Route backgrounded by Tickenham Ridge



Photograph D1.48: Existing view from National Cycle Route 26 on Kennmoor Road, near the junction with Nailsea Wall, looking southeast across fields with the F Route and the route of the proposed 400kV overhead line screened by field boundary hedgerows and trees

A	22/03/2014	DCO SUBMISSION	JS	NH	NH
ISSUE	DATE	COMMENTS	DRAW	CHK'D	APP'D
<div>Title</div> <div>NATIONAL GRID (HINKLEY POINT C CONNECTION PROJECT) ENVIRONMENTAL STATEMENT VOLUME 5.7.3</div>					
<div>SECTION D: PHOTOGRAPHS OF EXISTING VIEWS WITHIN 1KM</div>					
<div><div><div>nationalgrid</div><div>National Grid plc, Warwick Technology Park, Galloway Hill, Warwick, CV34 6DA</div></div></div>					
NG INVESTMENT No.	APPLICATION No.		IN		
20897	EN020001		A3		
FIGURE No.	DRAWING No.	SCALE		NTS	
7.9.17	IN1979.24.004				
SHEET 17 OF 34				ISSUE	
				A	




Photograph D1.49: Existing view from PRow LA21/37 looking east along the River Kenn with the route of the proposed 400kV overhead line and the F Route screened by trees



Photograph D1.50: Existing view from Nailsea Wall looking east across fields with the route of the proposed 400kV overhead line and the F Route just visible in the distance above hedgerows and trees



Photograph D1.51: Existing view from Nailsea Wall, near a property adjacent to the River Kenn, looking south across fields with the route of the proposed 400kV overhead line and the F Route visible in the distance above trees

A	22/03/2014	DCO SUBMISSION	JS	NH	NH
ISSUE	DATE	COMMENTS	DRAW	CHK'D	APP'D
<u>Title</u> NATIONAL GRID (HINKLEY POINT C CONNECTION PROJECT) ENVIRONMENTAL STATEMENT VOLUME 5.7.3 SECTION D: PHOTOGRAPHS OF EXISTING VIEWS WITHIN 1KM					
 National Grid plc, Warwick Technology Park, Galloway Hill, Warwick, CV34 6DA					
NG INVESTMENT No.	APPLICATION No.		IN		
20897	EN020001		A3		
FIGURE No.	DRAWING No.	SCALE NTS		ISSUE	
7.9.18	IN1979.24.004			A	
SHEET 18 OF 34					



Photograph D1.52: Existing view from Nailsea Wall looking northeast along the route of the proposed 400kV overhead line and F Route across Nailsea Moor, and towards the W Route and Tickenham Ridge in the distance



Photograph D1.53: Existing view from PRow LA21/37 adjacent to the River Kenn, looking southwest along the F Route and the route of the proposed 400kV overhead line across Kenn Moor



Photograph D1.54: Existing view from PRow LA13/2 east of West End looking northeast across fields towards the W Route with the location of the proposed CSEPP screened by trees

A	22/03/2014	DCO SUBMISSION	JS	NH	NH
ISSUE	DATE	COMMENTS	DRAW	CHK'D	APP'D
<div>Title</div> <div>NATIONAL GRID (HINKLEY POINT C CONNECTION PROJECT) ENVIRONMENTAL STATEMENT VOLUME 5.7.3</div> <div>SECTION D: PHOTOGRAPHS OF EXISTING VIEWS WITHIN 1KM</div>					
<div><div>nationalgrid</div><div>National Grid plc, Warwick Technology Park, Gallows Hill, Warwick, CV34 6DA</div></div>					
NG INVESTMENT No.	APPLICATION No.		IN		
20897	EN020001		A3		
FIGURE No.	DRAWING No.			SCALE	
7.9.19	IN1979.24.004			NTS	
SHEET 19 OF 34				ISSUE	
				A	



Photograph D1.55: Existing view from West End Lane in West End, looking northwest across fields with the top of the F Route and the route of the proposed 400kV overhead line visible in the distance above landform, screened in places by trees and buildings. The F Route is backgrounded by Tickenham Ridge



Photograph D1.56: Existing view from PRow LA13/4 looking west across fields and over properties in West End with the top of the F Route and the route of the proposed 400kV overhead line visible in the distance above trees



Photograph D1.57: Existing view from PRow LA13/4 looking northeast across fields along the W Route with the F Route and the route of the proposed 400kV overhead line in the distance, backgrounded in places by Tickenham Ridge

A	22/03/2014	DCO SUBMISSION	JS	NH	NH
ISSUE	DATE	COMMENTS	DRAW	CHKD	APP'D

<u>Title</u> NATIONAL GRID (HINKLEY POINT C CONNECTION PROJECT) ENVIRONMENTAL STATEMENT VOLUME 5.7.3 SECTION D: PHOTOGRAPHS OF EXISTING VIEWS WITHIN 1KM					
--	--	--	--	--	--



Photograph D1.58: Existing view from PRow LA13/5 near Engine Lane on the edge of Nailsea, looking southwest across fields towards Nailsea and Backwell RFC and the W Route, with the top of the F Route and the route of the proposed 400kV overhead line visible in the distance above trees



Photograph D1.59: Existing view from West End Lane adjacent to Coombe Farm in West End, looking north across Nailsea Moor towards the F Route and the route of the proposed 400kV overhead line visible above hedgerows and trees and partially backgrounded by Tickenham Ridge



Photograph D1.60: Existing view from PRow LA13/1 looking northeast along F Route and the route of the proposed 400kV overhead line across Nailsea Moor and Tickenham Ridge, with the W Route visible in the distance near West End

A	22/03/2014	DCO SUBMISSION	JS	NH	NH
ISSUE	DATE	COMMENTS	DRAW	CHK'D	APP'D
<div>Title</div> <div>NATIONAL GRID (HINKLEY POINT C CONNECTION PROJECT) ENVIRONMENTAL STATEMENT VOLUME 5.7.3</div> <div>SECTION D: PHOTOGRAPHS OF EXISTING VIEWS WITHIN 1KM</div>					
<div><div>nationalgrid</div><div>National Grid plc, Warwick Technology Park, Galloway Hill, Warwick, CV34 6DA</div></div>					
NG INVESTMENT No.		APPLICATION No.		IN	
20897		EN020001		A3	
FIGURE No.		DRAWING No.		SCALE	
7.9.21		IN1979.24.004		NTS	
SHEET 21 OF 34				ISSUE	
				A	



Photograph D1.61: Existing view from PRow LA13/49 along North Drove, at the junction with PRow LA13/50, looking southeast across Nailsea Moor towards the route of the proposed 400kV overhead line, the F Route and the W Route in the distance at West End



Photograph D1.62: Existing view from PRow LA13/49 along North Drove, looking northeast across Nailsea Moor along the route of the proposed 400kV overhead line towards Causeway House, Causeway, Tickenham Church and Tickenham Ridge



Photograph D1.63 (Part 1): Existing view from PRow LA13/49 along North Drove, looking southwest towards properties on Parish Brook Road on the edge of Nailsea, with the F Route across the view and the W Route visible above properties and trees

A	22/03/2014	DCO SUBMISSION	JS	NH	NH
ISSUE	DATE	COMMENTS	DRAW	CHK'D	APP'D
<div>Title</div> <div>NATIONAL GRID (HINKLEY POINT C CONNECTION PROJECT) ENVIRONMENTAL STATEMENT VOLUME 5.7.3</div> <div>SECTION D: PHOTOGRAPHS OF EXISTING VIEWS WITHIN 1KM</div>					
<div><div><div>nationalgrid</div></div><div>National Grid plc, Warwick Technology Park, Gallowes Hill, Warwick, CV34 6DA</div></div>					
NG INVESTMENT No.	APPLICATION No.		IN		
20897	EN020001		A3		
FIGURE No.	DRAWING No.			SCALE	
7.9.22	IN1979.24.004			NTS	
SHEET 22 OF 34				ISSUE	
				A	



Photograph D1.63 (Part 2): Existing view from PRow LA13/49 along North Drove, looking west across Nailsea Moor towards the route of the proposed 400kV overhead line and the F Route



Photograph D1.64: Existing view from Rhyne View in Nailsea, looking northeast with the F Route and W Route visible above properties and trees, and the route of the proposed 400kV overhead line in the distance with Tickenham Ridge in the background



Photograph D1.65: Existing view from Fir Leaze in Nailsea looking north towards properties with the W Route, F Route and the route of the proposed 400kV overhead line visible above properties with the top of Tickenham Ridge in the distance



Photograph D1.66: Existing view from Union Street in Nailsea looking north towards properties with the W Route, F Route and the route of the proposed 400kV overhead line visible above buildings with the top of Tickenham Ridge in the distance

A	22/03/2014	DCO SUBMISSION	JS	NH	NH
ISSUE	DATE	COMMENTS	DRAW	CHKD	APP'D

Title NATIONAL GRID (HINKLEY POINT C CONNECTION PROJECT) ENVIRONMENTAL STATEMENT VOLUME 5.7.3					
SECTION D: PHOTOGRAPHS OF EXISTING VIEWS WITHIN 1KM					

nationalgrid <small>National Grid plc, Warwick Technology Park, Galloway Hill, Warwick, CV34 6DA</small>					
NG INVESTMENT No.	APPLICATION No.		IN		
20897	EN020001		A3		
FIGURE No.	DRAWING No.		SCALE		
7.9.23	IN1979.24.004		NTS		
SHEET 23 OF 34					ISSUE
					A



Photograph D1.67: Existing view from PRow LA13/8 on the north edge of Nailsea, part of the Nailsea Round circular route, looking northwest towards the F Route, W Route and the route of the proposed 400kV overhead line with Tickenham Church and Tickenham Ridge in the distance



Photograph D1.68: Existing view from Causeway, north of Nailsea, looking northeast across Nailsea Moor towards the route of the proposed 400kV overhead line and along the road towards Tickenham Ridge



Photograph D1.69: Existing view from Pound Lane in Nailsea, near Greenslade Gardens, looking northwest across fields along the W Route, F Route and the route of the proposed 400kV overhead line towards Stone-edge Batch and partially backgrounded by Tickenham Ridge. Tickenham Church is visible in the distance

A	22/03/2014	DCO SUBMISSION	JS	NH	NH
ISSUE	DATE	COMMENTS	DRAW	CHKD	APP'D

Title NATIONAL GRID (HINKLEY POINT C CONNECTION PROJECT) ENVIRONMENTAL STATEMENT VOLUME 5.7.3 SECTION D: PHOTOGRAPHS OF EXISTING VIEWS WITHIN 1KM					
--	--	--	--	--	--

<div><div><div>nationalgrid</div><div>National Grid plc, Warwick Technology Park, Galloway Hill, Warwick, CV34 6DA</div></div></div>			
NG INVESTMENT No.	APPLICATION No.		IN
20897	EN020001		A3
FIGURE No.	DRAWING No.	SCALE	
7.9.24	IN1979.24.004	NTS	
SHEET 24 OF 34			ISSUE
			A



Photograph D1.70: Existing view from PRow LA16/17 near Stone-edge Batch, looking southwest across Nailsea Moor towards the W Route, F Route and the route of the proposed 400kV overhead line with Nailsea in the distance



Photograph D1.71: Existing view from PRow LA16/21 along Land Yeo south of properties on Church Lane in Stone-edge Batch, looking south across Nailsea Moor towards the route of the proposed 400kV overhead line, F Route and the W Route. Both the F Route and W Route are visible above hedgerows and trees and partially backgrounded by properties in Nailsea and Cleeve Ridge with Tickenham Church visible to the west




Photograph D1.72: Existing view from the car park viewing point on Causeway south of Tickenham Church, looking south across Nailsea Moor towards the route of the proposed 400kV overhead line, with the F Route and W Route visible above trees and partially backgrounded by properties in Nailsea and Cleeve Ridge

A	22/03/2014	DCO SUBMISSION	JS	NH	NH
ISSUE	DATE	COMMENTS	DRAW	CHKD	APP'D

Title
NATIONAL GRID (HINKLEY POINT C
CONNECTION PROJECT)
ENVIRONMENTAL STATEMENT
VOLUME 5.7.3

SECTION D: PHOTOGRAPHS OF EXISTING
VIEWS WITHIN 1KM

 National Grid plc, Warwick Technology Park, Galloway Hill, Warwick, CV34 6DA			
NG INVESTMENT No.	APPLICATION No.		IN
20897	EN020001		A3
FIGURE No.	DRAWING No.	SCALE	NTS
7.9.25	IN1979.24.004		
SHEET 25 OF 34			ISSUE
			A



Photograph D1.73: Existing view from the car park viewing point on Causeway south of Tickenham Church, looking east towards the route of the proposed 400kV overhead line and 132kV underground cables across Nailsea Moor, with the F Route and W Route visible near Nailsea and Stone-edge Batch and partially backgrounded by trees, properties and Tickenham Ridge




Photograph D1.74: Existing view from the B3130 Clevedon Road, near properties on the east edge of Tickenham, looking south towards Tickenham Church with the route of the proposed 400kV overhead line, the F Route and the W Route visible above trees across Nailsea Moor and on raised landform at Stone-edge Batch, backgrounded in places by Nailsea and Cleeve Ridge



Photograph D1.75: Existing view from PRow LA20/7 north of Nailsea, near fishing lakes and Jacklands Bridge, looking west between properties towards the W Route, F Route and the route of the proposed 400kV overhead line screened in places by trees and buildings

A	22/03/2014	DCO SUBMISSION	JS	NH	NH
ISSUE	DATE	COMMENTS	DRAW	CHKD	APP'D

Title NATIONAL GRID (HINKLEY POINT C CONNECTION PROJECT) ENVIRONMENTAL STATEMENT VOLUME 5.7.3 SECTION D: PHOTOGRAPHS OF EXISTING VIEWS WITHIN 1KM					
--	--	--	--	--	--

 National Grid plc, Warwick Technology Park, Galloway Hill, Warwick, CV34 6DA			
NG INVESTMENT No.	APPLICATION No.		IN
20897	EN020001		A3
FIGURE No.	DRAWING No.	SCALE	
7.9.26	IN1979.24.004	NTS	
SHEET 26 OF 34			ISSUE
			A



Photograph D1.76: Existing view from PRow LA20/7 north of Nailsea, looking west across fields with the W Route, F Route and the route of the proposed 400kV overhead line visible in the distance above hedgerows and largely screened by vegetation and buildings



Photograph D1.77: Existing view from PRow LA16/12 looking southwest towards trees with the W Route, the F Route and the route of the proposed 400kV overhead line screened by trees and vegetation



Photograph D1.78: Existing view from PRow LA20/2 looking west across fields with the W Route, F Route and the route of the proposed 400kV overhead line just visible in the distance above trees and buildings

A	22/03/2014	DCO SUBMISSION	JS	NH	NH
ISSUE	DATE	COMMENTS	DRAW	CHK'D	APP'D
<div>Title</div> <div>NATIONAL GRID (HINKLEY POINT C CONNECTION PROJECT) ENVIRONMENTAL STATEMENT VOLUME 5.7.3</div> <div>SECTION D: PHOTOGRAPHS OF EXISTING VIEWS WITHIN 1KM</div>					
<div><div>nationalgrid</div><div>National Grid plc, Warwick Technology Park, Galloway Hill, Warwick, CV34 6DA</div></div>					
NG INVESTMENT No.		APPLICATION No.		IN	
20897		EN020001		A3	
FIGURE No.		DRAWING No.		SCALE	
7.9.27		IN1979.24.004		NTS	
SHEET 27 OF 34				ISSUE	
				A	



Photograph D1.79: Existing view from PRow LA20/3 looking west across fields with the W Route, F Route and the route of the proposed 400kV overhead line just visible in the distance above trees and buildings



Photograph D1.80: Existing view from PRow LA20/28 near Towerhouse Lane, looking west across fields towards Nailsea and Tickenham Ridge with the W Route, the F Route and the route of the proposed 400kV overhead line just visible in the distance and partially backgrounded by Nailsea Moor



Photograph D1.81: Existing view from PRow LA16/23 south of Tickenham, looking southeast towards Tickenham Church, with the route of the proposed 400kV overhead line, the F Route and the W Route visible above trees across Nailsea Moor and up Tickenham Ridge, backgrounded in places by Nailsea, Cleeve Ridge and Tickenham Ridge

A	22/03/2014	DCO SUBMISSION	JS	NH	NH
ISSUE	DATE	COMMENTS	DRAW	CHKD	APP'D

Title					
NATIONAL GRID (HINKLEY POINT C CONNECTION PROJECT)					
ENVIRONMENTAL STATEMENT					
VOLUME 5.7.3					
SECTION D: PHOTOGRAPHS OF EXISTING VIEWS WITHIN 1KM					

nationalgrid			
National Grid plc, Warwick Technology Park, Galloway Hill, Warwick, CV34 6DA			
NG INVESTMENT No.	APPLICATION No.		IN
20897	EN020001		A3
FIGURE No.	DRAWING No.		SCALE
7.9.28	IN1979.24.004		NTS
SHEET 28 OF 34			ISSUE
			A



Photograph D1.82: Existing view from the public open space on Hannah More Road, Nailsea. The W Route (upper sections of Pylon W38 and conductors) are visible in the distance, viewed against the sky. Vegetation and buildings control wider views from this location




Photograph D1.83: Existing view looking west from Engine Lane, Nailsea, in the vicinity of Worcester Gardens, towards the route of the 132kV underground cables. The W Route is across the view but partly obscured by intervening hedgerows and trees. The sports ground floodlighting and rugby posts are also visible. Tickenham Ridge provides the distant backdrop in the northwest



Photograph D1.84: Existing view looking west from Engine Lane, Nailsea, in the vicinity of Allington Gardens, towards the route of the 132kV underground cables. Hedgerows screen the lower elevation of the view with the W Route visible beyond. Tickenham Ridge provides the distant backdrop in the northwest

A	22/03/2014	DCO SUBMISSION	JS	NH	NH
ISSUE	DATE	COMMENTS	DRAW	CHKD	APP'D

Title					
NATIONAL GRID (HINKLEY POINT C CONNECTION PROJECT)					
ENVIRONMENTAL STATEMENT					
VOLUME 5.7.3					
SECTION D: PHOTOGRAPHS OF EXISTING VIEWS WITHIN 1KM					

			
National Grid plc, Warwick Technology Park, Galloway Hill, Warwick, CV34 6DA			
NG INVESTMENT No.	APPLICATION No.		IN
20897	EN020001		A3
FIGURE No.	DRAWING No.	SCALE	
7.9.29	IN1979.24.004	NTS	
SHEET 29 OF 34		ISSUE	
		A	



Photograph D1.85: Existing view from PRow LA13/4 looking west and northwest. The land is gently undulating, dropping down to Nailsea Moor and allowing long views towards Tickenham Ridge. The W Route crosses the view beyond the farm buildings and hedgerow



Photograph D1.86: Existing view from LA13/4 PRow. Bridleway at the junction of St Marys Grove, Engine Lane and Netherton Wood Lane. Looking west, the upper sections of two W Route pylons can be seen against the sky with hedgerows and agricultural buildings obscuring ground level views. Gaulacre Cottage is the prominent light coloured building towards the right of the photograph



Photograph D1.87: Existing view looking northwest from National Cycle Route 410 (also Regional Cycle Route 10) on Netherton Wood Lane, Nailsea. The W Route runs across the open agricultural fields with hedgerows and hedgerow trees defining the field boundaries. South Common Farm (D1.H166) with its mature garden setting can be seen towards the left side of the photo

A	22/03/2014	DCO SUBMISSION	JS	NH	NH
ISSUE	DATE	COMMENTS	DRAW	CHKD	APP'D

<u>Title</u> NATIONAL GRID (HINKLEY POINT C CONNECTION PROJECT) ENVIRONMENTAL STATEMENT VOLUME 5.7.3					
SECTION D: PHOTOGRAPHS OF EXISTING VIEWS WITHIN 1KM					

</



Photograph D1.88: Existing view from Netherton Wood Lane in the vicinity of receptor D1.H167, looking northeast towards the W Route. The more distant pylons are backgrounded by Tickenham Ridge including W36 which is proposed to be replaced by the heavier gauge platform pylon.



Photograph D1.89: Existing view from Netherton Wood Lane in the vicinity of Bay Tree Farm and residential properties at West End. Looking northwest the W Route is seen crossing the open agricultural fields; Pylon W36 which is proposed to be replaced by the platform pylon is backgrounded by Tickenham Ridge. Pylon W35 is more prominent in the view as it is nearer and partly seen against the sky



Photograph D1.90: Existing view from farm access track on West End Lane just to the north of D1.H112. Looking east towards the W Route across a gently incised landscape with properties nestled into a small intimate valley. There are long views across towards Nursebatch Farm with hedgerows and fencing limiting ground level views. Three spans of the W Route and an F Route pylon are visible in the distance, although distance and backgrounding render them barely perceptible

A	22/03/2014	DCO SUBMISSION	JS	NH	NH
ISSUE	DATE	COMMENTS	DRAW	CHKD	APP'D

Title					
NATIONAL GRID (HINKLEY POINT C CONNECTION PROJECT)					
ENVIRONMENTAL STATEMENT					
VOLUME 5.7.3					
SECTION D: PHOTOGRAPHS OF EXISTING VIEWS WITHIN 1KM					

nationalgrid			
National Grid plc, Warwick Technology Park, Galloway Hill, Warwick, CV34 6DA			
NG INVESTMENT No.	APPLICATION No.		IN
20897	EN020001		A3
FIGURE No.	DRAWING No.	SCALE	
7.9.31	IN1979.24.004	NTS	
SHEET 31 OF 34			ISSUE
			A



Photograph CH1.1: Existing view from a field access point on the B3133 adjacent to Churchill Substation and properties on AX14/59 looking north across fields to the terminal pylon at the substation and the W Route which is visible above trees. The route of the proposed development (both overhead line and underground cables) are visible in the adjacent field



Photograph CH1.2: Existing view from PROW AX16/10 looking southeast across fields towards Churchill Substation which is visible above trees. Wood pole lines are visible in the foreground. The W and Y Routes and the route of the proposed development are visible above trees beyond the substation



Photograph CH1.3: Existing view from AX16/10 to the south of Congresbury (Venus Street) looking south east across newly planted woodland towards Churchill Substation which is visible above trees. The W and Y Routes and the route of the proposed development are visible above trees beyond the substation

A	22/03/2014	DCO SUBMISSION	JS	NH	NH
ISSUE	DATE	COMMENTS	DRAW	CHKD	APPD

<div>Title</div> <div>NATIONAL GRID (HINKLEY POINT C CONNECTION PROJECT)</div> <div>ENVIRONMENTAL STATEMENT</div> <div>VOLUME 5.7.3</div> <div>SECTION D: PHOTOGRAPHS OF EXISTING VIEWS WITHIN 1KM</div>					
--	--	--	--	--	--

<div><div><div>nationalgrid</div><div>National Grid plc, Warwick Technology Park, Gallowes Hill, Warwick, CV34 6DA</div></div></div>			
NG INVESTMENT No.	APPLICATION No.		IN
20897	EN020001		A3
FIGURE No.	DRAWING No.	SCALE	
7.9.32	IN1979.24.004	NTS	
SHEET 32 OF 34			ISSUE
			A



Photograph CH1.4: Existing view from Iwood Lane adjacent to properties looking south east across pastoral fields towards Churchill Substation. The substation is screened by intervening trees. The W Route and the route of the proposed development are visible in the near distance. The W Route pylons are backgrounded by high ground of the Mendip Hills



Photograph CH1.5: Existing view from PRow A16/7 (Two Rivers Way long distance trail) looking south across fields towards Churchill Substation. The W and Y Routes are visible above trees but backgrounded by the Mendip Hills. The tops of the terminal pylons at Churchill Substation are visible above trees. The route of the proposed development visible on the skyline between the W Route and Churchill Substation



Photograph CH1.6: Existing view from PRow AX30/5 (Two Rivers Way long distance trail) looking south west across fields and along the W Route towards Churchill Substation. The top of terminal pylons at the substation are glimpsed above trees. The route of the proposed development is visible above trees to the immediate east of Churchill Substation

A	22/03/2014	DCO SUBMISSION	JS	NH	NH
ISSUE	DATE	COMMENTS	DRAW	CHKD	APP'D

<u>Title</u> NATIONAL GRID (HINKLEY POINT C CONNECTION PROJECT) ENVIRONMENTAL STATEMENT VOLUME 5.7.3 SECTION D: PHOTOGRAPHS OF EXISTING VIEWS WITHIN 1KM					
--	--	--	--	--	--

<div><div><div>nationalgrid</div><div>National Grid plc, Warwick Technology Park, Gallows Hill, Warwick, CV34 6DA</div></div></div>			
NG INVESTMENT No.	APPLICATION No.		IN
20897	EN020001		A3
FIGURE No.	DRAWING No.	SCALE	
7.9.33	IN1979.24.004	NTS	
SHEET 33 OF 34			ISSUE
			A



Photograph CH1.7: Existing view from PRow AX30/2 (Two Rivers Way long distance trail) adjacent to the edge of Wrington at Court Farm. The view is across pastoral fields with the W Route visible in the near distance and the Y Route visible above trees further away. The top of the terminal pylons at the substation are barely discernible above intervening trees. The route of the proposed development visible above trees where the Y and W Routes converge to the immediate east of Churchill Substation



Photograph CH1.8: Existing view from PRow AX14/58 looking south across fields towards Churchill Substation. The W Route is visible above trees. The Y Route is discernible beyond but backgrounded by the Mendip Hills. The tops of the terminal pylons at Churchill Substation are visible above trees. The route of the proposed development visible on the skyline between the W Route and Churchill Substation



Photograph CH1.9: Existing view from PRow AX14/58 to the north of Stoneycroft House looking south towards the W Route. The Y Route is screened by intervening trees. The proposed development visible above trees at the pylon on the W Route

A	22/03/2014	DCO SUBMISSION	JS	NH	NH
ISSUE	DATE	COMMENTS	DRAW	CHKD	APP'D

<u>Title</u> NATIONAL GRID (HINKLEY POINT C CONNECTION PROJECT) ENVIRONMENTAL STATEMENT VOLUME 5.7.3 SECTION D: PHOTOGRAPHS OF EXISTING VIEWS WITHIN 1KM					
--	--	--	--	--	--

<div><div></div><div><div><div></div><div></div></div><div><div></div><div></div></div></div><div><div></div><div></div></div><div><div></div><div></div></div></div> <div><div></div><div></div></div> <div><div></div><div></div></div> <div><div></div><div></div></div> <div><div></div><div></div></div> <div><div></div><div></div></div> <div><div></div><div></div></div> <div><div></div><div></div></div> <div><div></div><div></div></div> <div><div></div><div></div></div> <div><div></div><div></div></div> <div><div></div><div></div></div> <div><div></div><div></div></div> <div><div></div><div></div></div> <div><div></div><div></div></div> <div><div></div><div></div></div> <div><div></div><div></div></div> <div><div></div><div></div></div> <div><div></div><div></div></div> <div><div></div><div></div></div> <div><div></div><div></div></div> <div><div></div><div></div></div> <div><div></div><div></div></div> <div><div></div><div></div></div> <div><div></div><div></div></div> <div><div></div><div></div></div> <div><div></div><div></div></div> <div><div></div><div></div></div> <div><div></div><div></div></div> <div><div></div><div></div></div> <div><div></div><div></div></div> <div><div></div><div></div></div> <div><div></div><div></div></div> <div><div></div><div></div></div> <div><div></div><div></div></div> <div><div></div><div></div></div> <div><div></div><div></div></div> <div><div></div><div></div></div> <div><div></div><div></div></div> <div><div></div><div></div></div> <div><div></div><div></div></div> <div><div></div><div></div></div> <div><div></div><div></div></div> <div><div></div><div></div></div> <div><div></div><div></div></div> <div><div></div><div></div></div> <div><div></div><div></div></div> <div><div></div><div></div></div> <div><div></div><div></div></div> <div><div></div><div></div></div> <div><div></div><div></div></div> <div><div></div><div></div></div> <div><div></div><div></div></div> <div><div></div><div></div></div> <div><div></div><div></div></div> <div><div></div><div></div></div> <div><div></div><div></div></div> <div><div></div><div></div></div> <div><div></div><div></div></div> <div><div></div><div></div></div> <div><div></div><div></div></div> <div><div></div><div></div></div> <div><div></div><div></div></div> <div><div></div><div></div></div> <div><div></div><div></div></div> <div><div></div><div></div></div> <div><div></div><div></div></div> <div><div></div><div></div></div> <div><div></div><div></div></div> <div><div></div><div></div></div> <div><div></div><div></div></div> <div><div></div><div></div></div> <div><div></div><div></div></div> <div><div></div><div></div></div> <div><div></div><div></div></div> <div><div></div><div></div></div> <div><div></div><div></div></div> <div><div></div><div></div></div> <div><div></div><div></div></div> <div><div></div><div></div></div> <div><div></div><div></div></div> <div><div></div><div></div></div> <div><div></div><div></div></div> <div><div></div><div></div></div> <div><div></div><div></div></div> <div><div></div><div></div></div> <div><div></div><div></div></div> <div><div></div><div></div></div> <div><div></div><div></div></div> <div><div></div><div></div></div> <div><div></div><div></div></div> <div><div></div><div></div></div> <div><div></div><div></div></div> <div><div></div><div></div></div> <div><div></div><div></div></div> <div><div></div><div></div></div> <div><div></div><div></div></div> <div><div></div><div></div></div> <div><div></div><div></div></div> <div><div></div><div></div></div> <div><div></div><div></div></div> <div><div></div><div></div></div> <div><div></div><div></div></div> <div><div></div><div></div></div> <div><div></div><div></div></div> <div><div></div><div></div></div> <div><div></div><div></div></div> <div><div></div><div></div></div> <div><div></div><div></div></div> <div><div></div><div></div></div> <div><div></div><div></div></div> <div><div></div><div></div></div> <div><div></div><div></div></div> <div><div></div><div></div></div> <div><div></div><div></div></div> <div><div></div><div></div></div> <div><div></div><div></div></div> <div><div></div><div></div></div> <div><div></div><div></div></div> <div><div></div><div></div></div> <div><div></div><div></div></div> <div><div></div><div></div></div> <div><div></div><div></div></div> <div><div></div><div></div></div> <div><div></div><div></div></div> <div><div></div><div></div></div> <div><div></div><div></div></div> <div><div></div><div></div></div> <div><div></div><div></div></div> <div><div></div><div></div></div> <div><div></div><div></div></div> <div><div></div><div></div></div> <div><div></div><div></div></div> <div><div></div><div></div></div> <div><div></div><div></div></div> <div><div></div><div></div></div> <div><div></div><div></div></div> <div><div></div><div></div></div> <div><div></div><div></div></div> <div><div></div><div></div></div> <div><div></div><div></div></div> <div><div></div><div></div></div> <div><div></div><div></div></div> <div><div></div><div></div></div> <div><div></div><div></div></div> <div><div></div><div></div></div> <div><div></div><div></div></div> <div><div></div><div></div></div> <div><div></div><div></div></div> <div><div></div><div></div></div> <div><div></div><div></div></div> <div><div></div><div></div></div> <div><div></div><div></div></div> <div><div></div><div></div></div> <div><div></div><div></div></div> <div><div></div><div></div></div> <div><div></div><div></div></div> <div><div></div><div></div></div> <div><div></div><div></div></div> <div><div></div><div></div></div> <div><div></div><div></div></div> <div><div></div><div></div></div> <div><div></div><div></div></div> <div><div></div><div></div></div> <div><div></div><div></div></div> <div><div></div><div></div></div> <div><div></div><div></div></div> <div><div></div><div></div></div> <div><div></div><div></div></div> <div><div></div><div></div></div> <div><div></div><div></div></div> <div><div></div><div></div></div> <div><div></div><div></div></div> <div><div></div><div></div></div> <div><div></div><div></div></div> <div><div></div><div></div></div> <div><div></div><div></div></div> <div><div></div><div></div></div> <div><div></div><div></div></div> <div><div></div><div></div></div> <div><div></div><div></div></div> <div><div></div><div></div></div> <div><div></div><div></div></div> <div><div></div><div></div></div> <div><div></div><div></div></div> <div><div></div><div></div></div> <div><div></div><div></div></div> <div><div></div><div></div></div> <div><div></div><div></div></div> <div><div></div><div></div></div> <div><div></div><div></div></div> <div><div></div><div></div></div> <div><div></div><div></div></div> <div><div></div><div></div></div> <div><div></div><div></div></div> <div><div></div><div></div></div> <div><div></div><div></div></div> <div><div></div><div></div></div> <div><div></div><div></div></div> <div><div></div><div></div></div> <div><div></div><div></div></div> <div><div></div><div></div></div> <div><div></div><div></div></div> <div><div></div><div></div></div> <div><div></div><div></div></div> <div><div></div><div></div></div> <div><div></div><div></div></div> <div><div></div><div></div></div> <div><div></div><div></div></div> <div><div></div><div></div></div> <div><div></div><div></div></div> <div><div></div><div></div></div> <div><div></div><div></div></div> <div><div></div><div></div></div> <div><div></div><div></div></div> <div><div></div><div></div></div> <div><div></div><div></div></div> <div><div></div><div></div></div> <div><div></div><div></div></div> <div><div></div><div></div></div> <div><div></div><div></div></div> <div><div></div><div></div></div> <div><div></div><div></div></div> <div><div></div><div></div></div> <div><div></div><div></div></div> <div><div></div><div></div></div> <div><div></div><div></div></div> <div><div></div><div></div></div> <div><div></div><div></div></div> <div><div></div><div></div></div> <div><div></div><div></div></div> <div><div></div><div></div></div> <div><div></div><div></div></div> <div><div></div><div></div></div> <div><div></div><div></div></div> <div><div></div><div></div></div> <div><div></div><div></div></div> <div><div></div><div></div></div> <div><div></div><div></div></div> <div><div></div><div></div></div> <div><div></div><div></div></div> <div><div></div><div></div></div> <div><div></div><div></div></div> <div><div></div><div></div></div> <div><div></div><div></div></div> <div><div></div><div></div></div> <div><div></div><div></div></div> <div><div></div><div></div></div> <div><div></div><div></div></div> <div><div></div><div></div></div> <div><div></div><div></div></div> <div><div></div><div></div></div> <div><div></div><div></div></div> <div><div></div><div></div></div> <div><div></div><div></div></div> <div><div></div><div></div></div> <div><div></div><div></div></div> <div><div></div><div></div></div> <div><div></div><div></div></div> <div><div></div><div></div></div> <div><div></div><div></div></div> <div><div></div><div></div></div> <div><div></div><div></div></div> <div><div></div><div></div></div> <div><div></div><div></div></div> <div><div></div><div></div></div> <div><div></div><div></div></div> <div><div></div><div></div></div> <div><div></div><div></div></div> <div><div></div><div></div></div> <div><div></div><div></div></div> <div><div></div><div></div></div> <div><div></div><div></div></div> <div><div></div><div></div></div> <div><div></div><div></div></div> <div><div></div><div></div></div> <div><div></div><div></div></div> <div><div></div><div></div></div> <div><div></div><div></div></div> <div><div></div><div></div></div> <div><div></div><div></div></div> <div><div></div><div></div></div> <div><div></div><div></div></div> <div><div></div><div></div></div> <div><div></div><div></div></div> <div><div></div><div></div></div> <div><div></div><div></div></div> <div><div></div><div></div></div> <div><div></div><div></div></div> <div><div></div><div></div></div> <div><div></div><div></div></div> <div><div></div><div></div></div> <div><div></div><div></div></div> <div><div></div><div></div></div> <div><div></div><div></div></div> <div><div></div><div></div></div> <div><div></div><div></div></div> <div><div></div><div></div></div> <div><div></div><div></div></div> <div><div></div><div></div></div> <div><div></div><div></div></div> <div><div></div><div></div></div> <div><div></div><div></div></div> <div><div></div><div></div></div> <div><div></div><div></div></div> <div><div></div><div></div></div> <div><div></div><div></div></div> <div><div></div><div></div></div> <div><div></div><div></div></div> <div><div></div><div></div></div> <div><div></div><div></div></div> <div><div></div><div></div></div> <div><div></div><div></div></div> <div><div></div><div></div></div> <div><div></div><div></div></div> <div><div></div><div></div></div> <div><div></div><div></div></div> <div><div></div><div></div></div> <div><div></div><div></div></div> <div><div></div><div></div></div> <div><div></div><div></div></div> <div><div></div><div></div></div> <div><div></div><div></div></div> <div><div></div><div></div></div> <div><div></div><div></div></div> <div><div></div><div></div></div> <div><div></div><div></div></div> <div><div></div><div></div></div> <div><div></div><div></div></div> <div><div></div><div></div></div> <div><div></div><div></div></div> <div><div></div><div></div></div> <div><div></div><div></div></div> <div><div></div><div></div></div> <div><div></div><div></div></div> <div><div></div><div></div></div> <div><div></div><div></div></div> <div><div></div></div>			
--	--	--	--